

Subject to changes in design and scope of delivery
as well as further technical development.



LMS GUIDE

Vol. 1



Gewerbestraße 6 • 78086 Brigachtal
Fon +49 7721 20635-0 • info@lms-germany.de • lms-germany.de

Latest News



LMS Online Shop



05/2025



LMS - Ihr zuverlässiger Partner für Laborprodukte in Spitzenqualität

Seit über 40 Jahren sind wir die erste Adresse, wenn es um hochwertige Laborprodukte und zuverlässige Beschaffungslösungen geht. Mit unserer tiefen Marktkenntnis, einem Netzwerk aus Top-Herstellern und einem klaren Fokus auf Effizienz bietet LMS Ihnen echten Mehrwert.

Unser Versprechen

- ✓ Zugang zu führenden Markenprodukten
- ✓ Top-Konditionen durch starke Einkaufspartnerschaften
- ✓ Schnelle, reibungslose Logistik - alles aus einer Hand
- ✓ Persönliche Beratung und individuelle Lösungen

Ob Routinebedarf oder Spezialprodukt - wir liefern, was Sie brauchen. Unsere breite Auswahl deckt alle Anforderungen ab, und durch unsere direkte Anbindung an zahlreiche Hersteller beschaffen wir auch speziellere Artikel schnell und zuverlässig.

Dieser Katalog zeigt nur einen Ausschnitt. Fragen Sie uns gezielt nach Ihrem Bedarf - wir finden die passende Lösung, schnell und wirtschaftlich.

LMS - Ihr Vorteil im Einkauf. Ihre Stärke im Labor.
Nehmen Sie jetzt Kontakt auf - wir sind für Sie da!



LMS - your reliable partner for top-quality laboratory products

For over 40 years, we have been the first port of call when it comes to high-quality laboratory products and reliable procurement solutions. With our in-depth knowledge of the market, a network of top manufacturers and a clear focus on efficiency, LMS offers you real added value.

Our promise

- ✓ Access to leading brand products
- ✓ Top conditions thanks to strong purchasing partnerships
- ✓ Fast, smooth logistics - everything from a single source
- ✓ Personal advice and individual solutions

Whether routine requirements or special products - we supply what you need. Our wide selection covers all requirements, and thanks to our direct connection to numerous manufacturers, we can also procure more specialized items quickly and reliably.

This catalog only shows a selection. Ask us specifically about your requirements - we will find the right solution, quickly and economically.

LMS - Your advantage in purchasing. Your strength in the lab.
Contact us now - we are here for you!



**LMS - FOR YOUR BEST LAB
IN THE WORLD**

Unsere Partner

Our Partners



and many more...

AMCOR Parafilm® Sealing Film

1



Article-No.	Product	Unit
PM992	PARAFILM M, sealing film length 75 m, width 50 mm	1/ROLL
PM996	PARAFILM M sealing film length 38 m, width 100 mm	1/ROLL
PM998	PARAFILM M sealing film length 15 m, width 500 mm	1/ROLL
PM999	PARAFILM M sealing film length 75 m, width 100 mm	1/ROLL

AMERSHAM Nitrocellulose Western Blotting Membranes

2



Article-No.	Product	Unit
10600001	Amersham Protran 0.2 NC 300 mm x 4 m	1/ROLL
10600002	Amersham Protran 0.45 NC 300 mm x 4 m	1/ROLL

ANALYTIK JENA Biometra ThermoShaker

3



Article-No.	Product	Temperature range
846-051-500	Biometra TS1 ThermoShaker 100 - 240 V, EU plug	Room temperature +5 °C to 100 °C
846-051-600	Biometra TSC Thermal Shaker 100 - 240 V, EU plug	Room temperature -15 °C to 100 °C

■ Various block modules are available as accessories

ANALYTIK JENA Biometra TOne Series - Thermal cycler (PCR)

4



Article-No.	Product	Max. Heating / Cooling	Temperature uniformity (55 °C after 15 s)	Control accuracy
846-2-070-301	Biometra TOne 96 G, with gradient function	4.0 °C/s 3.3 °C/s	± 0.20 °C	± 0.1 °C
846-2-070-311	Biometra TOne 96	4.0 °C/s 3.3 °C/s	± 0.20 °C	± 0.1 °C

■ Block capacity: 96 x 0.2 mL tubes, 96 well microplates or 8 well strip

ANALYTIK JENA Biometra TAdvanced Series - Thermal cycler (PCR)

5



Article-No.	Product	Block capacity	Max. Heating / Cooling	Temperature uniformity (55 °C after 15 s)	Control accuracy
846-2-070-224	Biometra TAdvanced 384 *	384 well microplate	4.0 °C/s 2.0 °C/s	± 0.15 °C	± 0.1 °C
846-2-070-210	Biometra TAdvanced 60 *	60 x 0.5 mL tubes	6.0 °C/s 4.0 °C/s	± 0.20 °C	± 0.1 °C
846-2-070-211	Biometra TAdvanced 96 *	96 x 0.2 mL tubes, 96 well microplates or 8 well strips	6.0 °C/s 4.0 °C/s	± 0.20 °C	± 0.1 °C
846-2-070-251	Biometra TAdvanced 96 S *	96 x 0.2 mL tubes, 96 well microplates or 8 well strips	8.0 °C/s 5.5 °C/s	± 0.15 °C	± 0.1 °C
846-2-070-213	Biometra TAdvanced Twin 30	2 x 30 x 0.5 mL tubes	4.2 °C/s 3.3 °C/s	± 0.20 °C	± 0.1 °C
846-2-070-202	Biometra TAdvanced Twin 48 *	2 x 48 x 0.2 mL tubes, 2 x 48 well microplates, 2 x 6 x 8 well strips, 0.2 mL	5.2 °C/s 4.1 °C/s	± 0.20 °C	± 0.1 °C
846-2-070-215	Biometra TAdvanced Twin Combi	2 x 48 x 0.2 mL tubes, 2 x 48 well microplates, 2 x 6 x 8 well strips 0.2 mL, 2 x 18 (30 for tubes with small caps) x 0.5 mL	3.1 °C/s 2.3 °C/s	± 0.15 °C	± 0.1 °C

■ * Options: also available with gradient function

■ A wide range of interchangeable block modules is available. We will be happy to help you with your selection.

ANALYTIK JENA Biometra TRIO Series - Thermal cycler (PCR)

6



Article-No.	Product	Block capacity	Max. Heating / Cooling	Temperature uniformity (55 °C after 15 s)	Control accuracy
846-2-070-720	Biometra TRIO 30	3 x 30 x 0.5 mL tubes	4.0 °C/s 3.6 °C/s	± 0.20 °C	± 0.1 °C
846-2-070-723	Biometra TRIO 48	3 x 48 x 0.2 mL tubes, 3 x 48 well microplates, 3 x 6 x 8 well strips, 0.2 mL	5.0 °C/s 4.2 °C/s	± 0.20 °C	± 0.1 °C
846-2-070-724	Biometra TRIO Combi	combi blocks: 3 x 48-well (0.2 mL) and 3 x 18-well (0.5 mL)	3 °C/s 2.7 °C/s	± 0.20 °C	± 0.1 °C

ANALYTIK JENA qTOWERiris Series - Real-time Thermal Cycler

7



Article-No.	Product	Block capacity	Max. Heating Cooling
844-00858-2	qTOWERiris 384, incl. color module 1	384 well microplates with optical sealing foil	4.0 °C/s 2.0 °C/s
844-00859-2	qTOWERiris 384, UV ready, incl. color module 1		4.0 °C/s 2.0 °C/s
844-00855-2	qTOWERiris touch, incl. color module 1	96 well microplates with optical sealing foil, 8 well strips 0.1 mL or 0.2 mL with optical lids, 0.1 mL or 0.2 mL single tubes with optical lids	8.0 °C/s 5.5 °C/s
844-00856-2	qTOWERiris touch, UV ready, incl. color module 1		8.0 °C/s 5.5 °C/s
844-00853-2	qTOWERiris, incl. color module 1		8.0 °C/s 5.5 °C/s
844-00854-2	qTOWERiris, UV ready, incl. color module 1		8.0 °C/s 5.5 °C/s

Additional color modules:

Article-No.	Product	Colors
844-00820-0	Color module 1 for qTOWERiris Series	FAM™, SYBR®Green, ATTO425
844-00821-0	Color module 2 for qTOWERiris Series	JOE™, HEX™, VIC®, YakimaYellow®
844-00822-0	Color module 3 for qTOWERiris Series	TAMRA™, ATTO550
844-00823-0	Color module 4 for qTOWERiris Series	ROX™, TexasRed®, Cy3.5®
844-00824-0	Color module 5 for qTOWERiris Series	Cy5®, ATTO633
844-00825-0	Color module 6 for qTOWERiris Series	Cy5.5®, ATTO665
844-00826-0	Color module 7 for qTOWERiris Series	ATTO390, ATTO425
844-00530-0	Color modul protein 1	SYPRO®Orange

■ A maximum of 6 color modules can be retrofitted

ANALYTIK JENA Systems for Polyacrylamide Gel Electrophoresis (PAGE)

8



Article-No.	Product	Dimensions gel (W x D)	Max. sample throughput	Number of gels	Buffer volume
846-017-400	Biometra Eco-Maxi system EB	19.4 cm x 18.5 cm	2 x 30	2	5400 mL
846-017-402	Biometra Eco-Maxi system EBC	19.4 cm x 18.5 cm	2 x 30	2	6100 mL
846-017-100	Biometra Eco-Mini system E	9.4 cm x 8.0 cm	4 x 15	1 - 2 (4 with divider plates)	1.580 mL
846-017-102	Biometra Eco-Mini system EB	9.4 cm x 8.0 cm	4 x 15	1 - 2 (4 with divider plates)	2.180 mL
846-017-104	Biometra Eco-Mini system EBC	9.4 cm x 8.0 cm	4 x 15	± 0.20 °C	2.180 mL
846-017-105	Biometra Minigel-Twin w/o accessories	8.6 cm x 7.7 cm	2 x 28	1 - 2	440 mL
846-017-100	Biometra Minigel-Twin System	8.6 cm x 7.7 cm	2 x 28	1 - 2	440 mL

ANALYTIK JENA Biometra Compact - Agarose Gel Electrophoresis

9



Article-No.	Product	Gel size (W x D)	Max. capacity	Buffer volume
846-025-099	Biometra Compact XS system	8.2 cm x 7.1 cm	32 Samples with 2 combs	360 mL
846-025-199	Biometra Compact S system	8.2 cm x 10.5 cm	48 Samples with 3 combs	360 mL
846-025-299	Biometra Compact M system	12.4 cm x 14.5 cm	100 Samples with 4 combs	580 mL
846-025-399	Biometra Compact L system	23.9 cm x 20.0 cm	312 Samples with 6 combs	1660 mL
846-025-499	Biometra Compact XL system	23.9 cm x 25.1 cm	416 Samples with 8 combs	1660 mL
846-025-592	Biometra Compact Multi-Wide System	15 cm x 10 cm	96 Samples with 3 combs	1300 mL
846-025-593	Biometra Compact Multi-Wide System	15 cm x 15 cm	160 Samples with 5 combs	1300 mL
846-025-594	Biometra Compact Multi-Wide System	15 cm x 18 cm	192 Samples with 6 combs	1300 mL
846-025-591	Biometra Compact Multi-Wide System	15 cm x 7 cm	64 Samples with 2 combs	1300 mL
846-025-599	Biometra Compact Multi-Wide System	15 cm x 7/10/15/18 cm	192 Samples with 6 combs	1300 mL

■ Comb thickness available: 1.0 mm and 1.5 mm

ANALYTIK JENA Western Blotting

10



Article-No.	Product	Blotting area (W x D)	Transfer buffer requirement	Capacity of device
846-015-100	Fastblot B43 with ports for cooling option	16 cm x 20 cm	< 200 mL	2 mini gels or 1 midi gel
846-015-200	Fastblot B44 without cooling option	16 cm x 20 cm	< 200 mL	2 mini gels or 1 midi gel
846-018-401	Tankblot Eco-Maxi system EB for 2 gels	22 cm x 19 cm	6100 mL	2 maxi gels
846-018-400	Tankblot Eco-Maxi system EBC for 2 gels	22 cm x 19 cm	6100 mL	2 maxi gels
846-018-101	Tankblot Eco-Mini system EB for up to 4 gels	8.0 cm x 9.4 cm	2100 mL	4 mini gels
846-018-100	Tankblot Eco-Mini system EBC for up to 4 gels	8.0 cm x 9.4 cm	2100 mL	4 mini gels

ANALYTIK JENA Power supplies

11



Article-No.	Product	Timer	Number of output jackets	Stackable	Max. voltage	Max. power	Max. current
846-040-800	Biometra P25 Standard Power Pack	no	4 pairs	yes	400 V	200 W	1000 mA
846-040-850	Biometra P25T Standard Power Pack with timer	yes	4 pairs	yes	400 V	200 W	1000 mA
846-040-101	Biometra PS 300TP 100 - 240 V	yes	2 pairs	no	300 V	60 W	400 mA

AXYGEN AxyPet® Single-channel Pipettors

12



Article-No.	Product	Volume	Unit
AP-2	Axygen single-channel pipettors	0.2-10 µL	1/EA
AP-10	Axygen single-channel pipettors	0.5-10 µL	1/EA
AP-20	Axygen single-channel pipettors	2 - 20 µL	1/EA
AP-100	Axygen single-channel pipettors	10-100 µL	1/EA
AP-200	Axygen single-channel pipettors	20-200 µL	1/EA
AP-1000	Axygen single-channel pipettors	100-1000 µL	1/EA
AP-5000	Axygen single-channel pipettors	1-5 mL	1/EA
AP-10ml	Axygen single-channel pipettors	1-10 mL	1/EA

AXYGEN AxyPet® Multi-channel Pipettors

13



Article-No.	Product	Volume	Unit
AP-8-10	Axygen 8-channel pipettors	1-10 µL	1/EA
AP-8-50	Axygen 8-channel pipettors	5-50 µL	1/EA
AP-8-200	Axygen 8-channel pipettors	20-200 µL	1/EA
AP-8-300	Axygen 8-channel pipettors	50-300 µL	1/EA
AP-12-10	Axygen 12-channel pipettors	1-10 µL	1/EA
AP-12-50	Axygen 12-channel pipettors	5-50 µL	1/EA
AP-12-200	Axygen 12-channel pipettors	20-200 µL	1/EA
AP-12-300	Axygen 12-channel pipettors	50-300 µL	1/EA
AP-16	Axygen 16-channel pipettors	0.5-10 µL	1/EA
AP-16-2	Axygen 16-channel pipettors	0.2-2 µL	1/EA
AP-16-50	Axygen 16-channel pipettors	5-50 µL	1/EA

AXYGEN Microvolume Pipet Tips, rack

14



Article-No.	Product	Volume	Unit
T-300	Pipet Tips	0.5-10 µL	1,000/PK 20,000/CS
T-400	Ultra Micro Pipet Tips	0.5-20 µL	1,000/PK 20,000/CS
T-200-Y	Universal Fit Pipet Tips	1-200 µL	1,000/PK 20,000/CS
TR-222-Y	Universal Fit Pipet Tips	200 µL	1,000/PK 20,000/CS
T-1000-B	Pipet Tips	100-1000 µL	1,000/PK 5,000/CS
T-5000-C	Macrovolume Pipet Tips	1-5 mL	250/PK
T-10ML-C	Macrovolume Pipet Tips	1-10 mL	250/PK

AXYGEN Microvolume Pipet Tips Rack

15



Article-No.	Product	Volume	Unit
T-300-R	Microvolume Pipet Tips	0.5-10 µL	96/RACK 960/PK
T-200-Y-R	Universal Fit Filter Tips	1-200 µL	96/RACK 960/PK
T-1000-B-R	Pipet Tips	100-1000 µL	100/RACK 1,000/PK
T-300-R-S	Microvolume Pipette Tips	0.5-10 µL	960/PK
T-200-Y-R-S	Universal Fit Filter Tips	1-200 µL	960/PK
T-1000-B-R-S	Pipet Tips	100-1000 mL	1000/PK

AXYGEN Aerosol Barrier Tips

16



Article-No.	Product	Volume	Unit
TF-300-R-S	Microvolume, Gilson-Style P2/P10 Filter Tips	0.5-10 µL	960/PK
TF-20-R-S	Universal Fit Filter Tips	0.5-20 µL	960/PK
TF-100-R-S	Universal Fit Filter Tips	1-100 µL	960/PK
TF-200-R-S	Universal Fit Filter Tips	0.5-200 µL	960/PK
TF-1000-R-S	Universal Fit Filter Tips	100-1000 µL	1000/PK

AXYGEN Aerosol Barrier Tips - MaxymumRecovery®

17



Article-No.	Product	Volume	Unit
TF-300-L-R-S	MaxymumRecovery, Gilson-Style P2/P10 Filter Tips	0.5-10 µL	960/PK
TF-20-L-R-S	MaxymumRecovery Universal Fit Filter Tips	0.5-20 µL	960/PK
TF-100-L-R-S	MaxymumRecovery Universal Fit Filter Tips	1-100 µL	960/PK
TF-200-L-R-S	MaxymumRecovery Universal Fit Filter Tips	1-200 µL	960/PK
TF-1000-L-R-S	MaxymumRecovery Universal Fit Filter Tips	100-1000 µL	1000/PK

AXYGEN Tip Refill System

18



Article-No.	Product	Unit
RFL-300-C	10 µL Refill Rack	5packs/CS
RFL-222-C	100 µL Refill Rack	5packs/CS
RFL-R	Empty Rack, Refill Rack for 10 µL and 200 µL Tips	10Racks/PK

AXYGEN Thin Wall PCR Tubes

19



Article-No.	Product	Unit
PCR-02-A	0.2 mL Thin Wall PCR Tubes with Flat Cap, Assorted, Nonsterile	1,000/PK
PCR-02-CP	0.2 mL Thin Wall PCR Tubes with Flat Cap, Clear, Nonsterile	1,000/PK
PCR-02D-C	0.2 mL Thin Wall PCR Tubes with Domed Cap, Clear, Nonsterile	1,000/PK
PCR-05-C	0.5 mL Thin Wall PCR Tubes with Flat Cap, Clear, Nonsterile	1,000/PK

AXYGEN MaxyClear SnapLock Microcentrifuge Tubes

20



Article-No.	Product	Unit
MCT-060-A	0.6 mL Microcentrifuge Tubes, Assorted, Nonsterile	1,000/PK, 10,000/CS
MCT-060-C	0.6 mL Microcentrifuge Tubes, Clear, Nonsterile	1,000/PK, 10,000/CS
MCT-060-C-S	0.6 mL Microcentrifuge Tubes, Clear, Sterile	500/PK, 5,000/CS
MCT-060-X	0.6 mL Microcentrifuge Tubes, Amber, Nonsterile	1,000/PK, 10,000/CS
MCT-150-A	1.5 mL Microcentrifuge Tubes, Assorted, Nonsterile	500/PK, 5,000/CS
MCT-150-B	1.5 mL Microcentrifuge Tubes, Blue, Nonsterile	500/PK, 5,000/CS
MCT-150-C	1.5 mL Microcentrifuge Tubes, Clear, Nonsterile	1,000/PK, 5,000/CS
MCT-150-C-S	1.5 mL Microcentrifuge Tubes, Clear, Sterile	250/PK, 2,500/CS
MCT-150-G	1.5 mL Microcentrifuge Tubes, Green, Nonsterile	500/PK, 5,000/CS
MCT-150-O	1.5 mL Microcentrifuge Tubes, Orange, Nonsterile	500/PK, 5,000/CS
MCT-150-R	1.5 mL Microcentrifuge Tubes, Red, Nonsterile	500/PK, 5,000/CS
MCT-150-X	1.5 mL Microcentrifuge Tubes, Amber, Nonsterile	500/PK, 5,000/CS
MCT-150-Y	1.5 mL Microcentrifuge Tubes, Yellow, Nonsterile	500/PK, 5,000/CS
MCT-175-A	1.7 mL Microcentrifuge Tubes, Assorted, Nonsterile	500/PK, 5,000/CS
MCT-175-B	1.7 mL Microcentrifuge Tubes, Blue, Nonsterile	500/PK, 5,000/CS
MCT-175-C	1.7 mL Microcentrifuge Tubes, Clear, Nonsterile	1,000/PK, 5,000/CS
MCT-175-C-S	1.7 mL Microcentrifuge Tubes, Clear, Sterile	250/PK, 2,500/CS
MCT-175-G	1.7 mL Microcentrifuge Tubes, Green, Nonsterile	500/PK, 5,000/CS
MCT-175-O	1.7 mL Microcentrifuge Tubes, Orange, Nonsterile	500/PK, 5,000/CS
MCT-175-R	1.7 mL Microcentrifuge Tubes, Red, Nonsterile	500/PK, 5,000/CS
MCT-175-X	1.7 mL Microcentrifuge Tubes, Amber, Nonsterile	500/PK, 5,000/CS
MCT-175-Y	1.7 mL Microcentrifuge Tubes, Yellow, Nonsterile	500/PK, 5,000/CS
MCT-200-A	2.0 mL Microcentrifuge Tubes, Assorted, Nonsterile	500/PK, 5,000/CS
MCT-200-C	2.0 mL Microcentrifuge Tubes, Clear, Nonsterile	500/PK, 5,000/CS
MCT-200-X	2.0 mL Microcentrifuge Tubes, Amber, Nonsterile	500/PK, 5,000/CS

AXYGEN PCR Tube Strips

21



Article-No.	Product	Unit
PCR-0208-C	0.2 mL PCR 8 Tube Strips, Clear	125/PK, 1250/CS
PCR-02CP-C	0.2 mL PCR 1x8 Strip Domed Caps, Clear	125/PK, 1250/CS
PCR-2CP-RT-C	0.2 mL PCR 1x8 Strip Flat Caps, Ultra-Clear	125/PK, 1250/CS
PCR-02-FCP-C	0.2 mL PCR 1x8 Strip Flat Caps, Clear	125/PK, 1250/CS
PCR-0208-CP-C	0.2 mL PCR 8 Tube Strips/ 8 Domed Cap Strips, Clear	125/PK, 1250/CS
PCR-0208-FCP-C	0.2 mL PCR 8 Tube Strips/ 8 Flat Cap Strips, Clear	125/PK, 1250/CS

BEL-ART Write-On Label Tapes

22



Article-No.	Product	Unit
F13480-0050	Write-on Label Tape 12.7 mm (1/2"), 13.7 m, White	6 ROLLS/PK
F13480-0075	Write-on Label Tape 19.0 mm (3/4"), 13.7 m, White	4 ROLLS/PK
F13480-0100	Write-on Label Tape 25.4 mm (1"), 13.7 m, White	3 ROLLS/PK
F13484-0050	Write-on Label Tape 12.7 mm (1/2"), 36.4 m, Red	6 ROLLS/PK
F13484-0075	Write-on Label Tape 19.0 mm (3/4"), 36.4 m, Red	4 ROLLS/PK
F13484-0100	Write-on Label Tape 25.4 mm (1"), 36.4 m, Red	3 ROLLS/PK
F13481-0050	Write-on Label Tape 12.7 mm (1/2"), 13.7 m, Yellow	6 ROLLS/PK
F13481-0075	Write-on Label Tape 19.0 mm (3/4"), 13.7 m, Yellow	4 ROLLS/PK
F13481-0100	Write-on Label Tape 25.4 mm (1"), 13.7 m, Yellow	3 ROLLS/PK
F13482-0050	Write-on Label Tape 12.7 mm (1/2"), 13.7 m, Green	6 ROLLS/PK
F13482-0075	Write-on Label Tape 19.0 mm (3/4"), 13.7 m, Green	4 ROLLS/PK
F13482-0100	Write-on Label Tape 25.4 mm (1"), 13.7 m, Green	3 ROLLS/PK
F13487-0050	Write-on Label Tape 12.7 mm (1/2"), 36.4 m, Blue	6 ROLLS/PK
F13487-0075	Write-on Label Tape 19.0 mm (3/4"), 36.4 m, Blue	4 ROLLS/PK
F13487-0100	Write-on Label Tape 25.4 mm (1"), 36.4 m, Blue	3 ROLLS/PK
F13488-0050	Write-on Label Tape 12.7 mm (1/2"), 36.4 m, Orange	6 ROLLS/PK
F13488-0075	Write-on Label Tape 19.05 mm (3/4"), 36.4 m, Orange	4 ROLLS/PK
F13488-0100	Write-on Label Tape 25.4 mm (1"), 36.4 m, Orange	3 ROLLS/PK

BINDER Drying and heating chambers

23



Article-No.	Product	Air circulation system	Volume	Temperature range
9010-0190	Series ED 23	with natural convection	20 L	+5 °C above ambient temperature to 300 °C
9010-0333	Series ED 56		57 L	
9010-0335	Series ED 115		114 L	
9010-0339	Series ED 260		255 L	
9010-0075	Series ED 400		400 L	
9010-0341	Series ED 720		743 L	
9010-0194	Series FD 23	with forced convection	20 L	+5 °C above ambient temperature to 300 °C
9010-0303	Series FD 56		60 L	+10 °C above ambient temperature to 300 °C
9010-0305	Series FD 115		116 L	
9010-0309	Series FD 260		259 L	
9010-0311	Series FD 720		741 L	+12 °C above ambient temperature to 300 °C

BINDER CO₂ incubators

24



Article-No.	Product	Sterilisation type	Volume	Temperature range
9640-0005	Series CB 56	with hot air sterilization and heat sterilizable CO2 sensor	53 L	+4 °C above ambient temperature to 60 °C
9640-0009	Series CB 170		170 L	+4 °C above ambient temperature to 60 °C
9640-0013	Series CB 260		267 L	+5 °C above ambient temperature to 60 °C
9640-0001	Series CB-S 170	with hot air sterilization	170 L	+6 °C above ambient temperature to 60 °C
9640-0003	Series CB-S 260		267 L	+6 °C above ambient temperature to 60 °C

BINDER Standard Incubators

25



Article-No.	Product	Air circulation system	Volume	Temperature range
9010-0187	Series BD 23	with natural convection	20 L	+5 °C above ambient temperature to 100 °C
9010-0323	Series BD 56		57 L	
9010-0325	Series BD 115		114 L	
9010-0329	Series BD 260		253 L	
9010-0073	Series BD 400		400 L	
9010-0331	Series BD 720		737 L	
9010-0313	Series BF 56	with forced convection	59 L	+7 °C above ambient temperature to 100 °C
9010-0315	Series BF 115		114 L	+8 °C above ambient temperature to 100 °C
9010-0319	Series BF 260		116 L	+7 °C above ambient temperature to 100 °C
9010-0241	Series BF 400		400 L	+5 °C above ambient temperature to 100 °C
9010-0321	Series BF 720		734 L	+10 °C above ambient temperature to 100 °C

BINDER Cooling incubators

26



Article-No.	Product	Cooling technology	Volume	Temperature range
9020-0471	Series KB 65	inverter compressor technology	63 L	0 °C to +70 °C
9020-0472	Series KB 130		127 L	
9020-0473	Series KB 260		262 L	
9020-0474	Series KB 470		472 L	
9020-0475	Series KB 720		727 L	
9020-0476	Series KB 1060		1070 L	
9020-0311	Series KT 53	thermoelectric cooling	53 L	+4 °C to +100 °C
9020-0313	Series KT 115		102 L	
9020-0289	Series KT 170		163 L	

BINDER Ultra-low temperature freezers

27



Article-No.	Product	Freezer racks per compartment	Capacity Cryoboxes (50 mm)	Volume	Temperature range
9020-0453	Series UF V 350	3	264	402 L	-90 °C to -40 °C
9020-0347	Series UF V 500	4	352	501 L	
9020-0348	Series UF V 700	6	528	736 L	

BRAND Single-channel Micropipette Transferpette® S, adjustable

28



Article-No.	Product	Volume	Unit
705868	Transferpette S, D-1	0.1-1 µL	1/EA
705869	Transferpette S, D-2.5	0.1-2.5 µL	1/EA
705870	Transferpette S, D-10	0.5-10 µL	1/EA
705872	Transferpette S, D-20	2-20 µL	1/EA
705873	Transferpette S, D-50	5-50 µL	1/EA
705874	Transferpette S, D-100	10-100 µL	1/EA
705878	Transferpette S, D-200	20-200 µL	1/EA
705880	Transferpette S, D-1000	100-1000 µL	1/EA
705882	Transferpette S, D-5000	500-5000 µL	1/EA
705884	Transferpette S, D-10000	1000-10000 µL	1/EA
705891	Transferpette S Starter-Kit: D20, D200, D1000		1/SET

BRAND Multi-channel Micropipette Transferpette® S, adjustable

29



Article-No.	Product	Volume	Unit
705900	Transferpette S-8, M8-10	0.5-10 µL	1/EA
705906	Transferpette S-8, M8-50	5-50 µL	1/EA
705908	Transferpette S-8, M8-100	10-100 µL	1/EA
705910	Transferpette S-8, M8-200	20-200 µL	1/EA
705912	Transferpette S-8, M8-300	30-300 µL	1/EA
705920	Transferpette S-8, M12-10	0.5-10 µL	1/EA
705926	Transferpette S-8, M12-50	5-50 µL	1/EA
705928	Transferpette S-8, M12-100	10-100 µL	1/EA
705930	Transferpette S-8, M12-200	20-200 µL	1/EA
705932	Transferpette S-8, M12-300	30-300 µL	1/EA

BRAND Single-channel Micropipette Transferpette® S, fixed-volume

30



Article-No.	Product	Volume	Unit
705808	Transferpette S F-10	10 µL	1/EA
705816	Transferpette S F-20	20 µL	1/EA
705820	Transferpette S F-25	25 µL	1/EA
705828	Transferpette S F-50	50 µL	1/EA
705838	Transferpette S F-100	100 µL	1/EA
705844	Transferpette S F-200	200 µL	1/EA
705854	Transferpette S F-500	500 µL	1/EA
705862	Transferpette S F-1,000	1,000 µL	1/EA
705864	Transferpette S F-2,000	2,000 µL	1/EA

BRAND Single-channel Micropipette Transferpette® S, electronic

31



Article-No.	Product	Volume	Unit
705299	Transferpette Electronic	0.5-10 µL	1/EA
705300	Transferpette Electronic	2-20 µL	1/EA
705303	Transferpette Electronic	20-200 µL	1/EA
705306	Transferpette Electronic	100-1000 µL	1/EA
705307	Transferpette Electronic	500-5000 µL	1/EA

BRAND Multi-channel Micropipette Transferpette® S, fixed-volume

32



Article-No.	Product	Volume	Unit
705400	Transferpette-8 Electronic	1-20 µL	1/EA
705403	Transferpette-8 Electronic	5-100 µL	1/EA
705404	Transferpette-8 Electronic	10-200 µL	1/EA
705406	Transferpette-8 Electronic	15-300 µL	1/EA
705449	Transferpette-12 Electronic	0.5-10 µL	1/EA
705450	Transferpette-12 Electronic	1-20 µL	1/EA
705453	Transferpette-12 Electronic	5-100 µL	1/EA
705454	Transferpette-12 Electronic	10-200 µL	1/EA
705456	Transferpette-12 Electronic	15-300 µL	1/EA

BRAND Bottle-top burettes Titrette®

33



Article-No.	Product	Volume	Unit
4760151	Burette Digital Titrette	25 mL	1/EA
4760161	Burette Digital Titrette	50 mL	1/EA
4760251	Burette Digital Titrette, RS232 interface	25 mL	1/EA
4760261	Burette Digital Titrette, RS232 interface	50 mL	1/EA

BRAND Repetitive Pipettes HandyStep® touch

34



Article-No.	Product	Unit
705200	Electronic Repetitive Pipette Handystep Touch	1/EA

BRAND Bottle-top dispensers Dispensette® S, analog-adjustable

35



Article-No.	Product	Volume	Unit
4600100	Dispensette S Analog-adj. red, w/o.RCV	0.1-1 mL	1/EA
4600101	Dispensette S Analog-adj. red, w.RCV	0.1-1 mL	1/EA
4600120	Dispensette S Analog-adj. red, w/o.RCV	0.2-2 mL	1/EA
4600121	Dispensette S Analog-adj. red, w.RCV	0.2-2 mL	1/EA
4600130	Dispensette S Analog-adj. red, w/o.RCV	0.5-5 mL	1/EA
4600131	Dispensette S Analog-adj. red, w.RCV	0.5-5 mL	1/EA
4600140	Dispensette S Analog-adj. red, w/o.RCV	1 -10 mL	1/EA
4600141	Dispensette S Analog-adj. red, w.RCV	1 -10 mL	1/EA
4600150	Dispensette S Analog-adj. red, w/o.RCV	2.5-25 mL	1/EA
4600151	Dispensette S Analog-adj. red, w.RCV	2.5-25 mL	1/EA
4600160	Dispensette S Analog-adj. red, w/o.RCV	5-50 mL	1/EA
4600161	Dispensette S Analog-adj. red, w.RCV	5-50 mL	1/EA
4601700	Dispensette S Analog-adj. red, w/o.RCV	10-100 mL	1/EA
4600171	Dispensette S Analog-adj. red, w.RCV	10-100 mL	1/EA

BRAND Bottle-top dispensers Dispensette® S, digital

36



Article-No.	Product	Volume	Unit
4600310	Dispensette S, Digital, red, w/o.RCV	0.1-1 mL	1/EA
4600311	Dispensette S, Digital, red, w.RCV	0.1-1 mL	1/EA
4600320	Dispensette S, Digital, red, w/o.RCV	0.2-2 mL	1/EA
4600321	Dispensette S, Digital, red, w.RCV	0.2-2 mL	1/EA
4600330	Dispensette S, Digital, red, w/o.RCV	0.5-5 mL	1/EA
4600331	Dispensette S, Digital, red, w.RCV	0.5-5 mL	1/EA
4600340	Dispensette S, Digital, red, w/o.RCV	1 -10 mL	1/EA
4600341	Dispensette S, Digital, red, w.RCV	1 -10 mL	1/EA
4600350	Dispensette S, Digital, red, w/o.RCV	2.5-25 mL	1/EA
4600351	Dispensette S, Digital, red, w.RCV	2.5-25 mL	1/EA
4600360	Dispensette S, Digital, red, w/o.RCV	5-50 mL	1/EA
4600361	Dispensette S, Digital, red, w.RCV	5-50 mL	1/EA

BRAND Bottle-top dispensers Dispensette® S, fixed-volume

37



Article-No.	Product	Volume	Unit
4600210	Dispensette® S, Fix, DE-M	1 mL	1/EA
4600220	Dispensette® S, Fix, DE-M	2 mL	1/EA
4600230	Dispensette® S, Fix, DE-M	5 mL	1/EA
4600240	Dispensette® S, Fix, DE-M	10 mL	1/EA

BRAND Bottle-top dispensers Dispensette® S Organic, analog-adjustable

38



Article-No.	Product	Volume	Unit
4630130	Dispensette S Organic Analog-adj. yellow, w/o.RCV	0.5-5 mL	1/EA
4630131	Dispensette S Organic Analog-adj. yellow, w.RCV	0.5-5 mL	1/EA
4630140	Dispensette S Organic Analog-adj. yellow, w/o.RCV	1-10 mL	1/EA
4630141	Dispensette S Organic Analog-adj. yellow, w.RCV	1-10 mL	1/EA
4630150	Dispensette S Organic Analog-adj. yellow, w/o.RCV	2.5-25 mL	1/EA
4630151	Dispensette S Organic Analog-adj. yellow, w.RCV	2.5-25 mL	1/EA
4630160	Dispensette S Organic Analog-adj. yellow, w/o.RCV	5-50 mL	1/EA
4630161	Dispensette S Organic Analog-adj. yellow, w.RCV	5-50 mL	1/EA
4630170	Dispensette S Organic Analog-adj. yellow, w/o.RCV	10-100 mL	1/EA
4630171	Dispensette S Organic Analog-adj. yellow, w.RCV	10-100 mL	1/EA

BRAND Bottle-top dispensers Dispensette® S Organic, digital

39



Article-No.	Product	Volume	Unit
4630331	Dispensette S Organic Digital. yellow, w/o.RCV	0.5-5 mL	1/EA
4630331	Dispensette S Organic Digital. yellow, w.RCV	0.5-5 mL	1/EA
4630340	Dispensette S Organic Digital. yellow, w/o.RCV	1-10 mL	1/EA
4630341	Dispensette S Organic Digital. yellow, w.RCV	1-10 mL	1/EA
4630350	Dispensette S Organic Digital. yellow, w/o.RCV	2.5-25 mL	1/EA
4630351	Dispensette S Organic Digital. yellow, w.RCV	2.5-25 mL	1/EA
4630360	Dispensette S Organic Digital. yellow, w/o.RCV	5-50 mL	1/EA
4630361	Dispensette S Organic Digital. yellow, w.RCV	5-50 mL	1/EA

BRAND Repetitive pipettes HandyStep® S

40



Article-No.	Product	Unit
705110	Repetitive Pipette Handystep S, 2ul-50ml	1/EA

BRAND Pipette controllers accu-jet® S

41



Article-No.	Product	Volume	Unit
26350	Accu-jet® S, anthracite	0.1-200 mL	1/EA

BRAND Pipet Tips- Bulk

42



Article-No.	Product	Volume	Unit
732022	Pipette Tips, Neutral, bulk	0.1-20 µL	1,000/PK
732024	Pipette Tips, Neutral, bulk	0.5-20 µL	1,000/PK
732026	Pipette Tips, Neutral, bulk	1-50 µL	1,000/PK
732028	Pipette Tips, Yellow, bulk	2-200 µL	1,000/PK
732030	Pipette Tips, Neutral, bulk	5-300 µL	1,000/PK
732032	Pipette Tips, Neutral, bulk	50-1000 µL	1,000/PK
702595	Pipette Tips, Neutral, bulk	50-1000 µL	200/PK
702595-1	Pipette Tips, Neutral, bulk	0.5-5 mL	200/PK
702600	Pipette Tips, Neutral, bulk	0.5-5 mL	1,000/PK
702603	Pipette Tips, Neutral, bulk	1-10 mL	200/PK
702603-1	Pipette Tips, Neutral, bulk	1-10 mL	100/PK
702604	Pipette Tips, Neutral, bulk	1-10 mL	1,000/PK

BRAND Pipet Tips- Bulk, Tip-Box

43



Article-No.	Product	Volume	Unit
732202	Pipette Tips, Neutral, Tip-Box	0.1-10 µL	480/PK
732204	Pipette Tips, Neutral, Tip-Box	0.5-20 µL	480/PK
732206	Pipette Tips, Neutral, Tip-Box	1-50 µL	480/PK
732208	Pipette Tips, Neutral, Tip-Box	2-200 µL	480/PK
732210	Pipette Tips, Neutral, Tip-Box	5-300 µL	480/PK
732212	Pipette Tips, Neutral, Tip-Box	50-1000 µL	480/PK
702605	Pipette Tips, Neutral, Tip-Box	0.5-5 mL	28/RACK
702608	Pipette Tips, Neutral, Tip-Box	1-10 mL	18/RACK
732102	Pipette Tips, Neutral, Tip-Box	0.1-20 µL	960/PK
732104	Pipette Tips, Neutral, Tip-Box	0.5-20 µL	960/PK
732106	Pipette Tips, Neutral, Tip-Box	1-50 µL	960/PK
732108	Pipette Tips, Neutral, Tip-Box	2-200 µL	960/PK
732110	Pipette Tips, Neutral, Tip-Box	5-300 µL	960/PK
732112	Pipette Tips, Neutral, Tip-Box	50-1000 µL	960/PK

BRAND Dispenser-Tips PD-Tips II, bulk, type encoded, non-sterile

44



Article-No.	Product	Volume	Unit
705700	PD-Tips II, Non-sterile, Bulk	0.1 mL	100/PK
705702	PD-Tips II, Non-sterile, Bulk	0.5 mL	100/PK
705704	PD-Tips II, Non-sterile, Bulk	1.0 mL	100/PK
705706	PD-Tips II, Non-sterile, Bulk	1.25 mL	100/PK
705708	PD-Tips II, Non-sterile, Bulk	2.5 mL	100/PK
705710	PD-Tips II, Non-sterile, Bulk	5 mL	100/PK
705712	PD-Tips II, Non-sterile, Bulk	10 mL	100/PK
705714	PD-Tips II, Non-sterile, Bulk	12.5 mL	100/PK
705716	PD-Tips II, Non-sterile, Bulk	25 mL	50/PK
705718	PD-Tips II, Non-sterile, Bulk	50 mL	25/PK
705720	PD-Tips II SET, Non-sterile, Bulk	0.5-1 2.5 mL	1/SET

BRAND Dispenser-Tips PD-Tips II, Packaged individually, type encoded, sterile

45



Article-No.	Product	Volume	Unit
705730	PD-Tips II, BIO-CERT, Sterile	0.1 mL	100/PK
705732	PD-Tips II, BIO-CERT, Sterile	0.5 mL	100/PK
705734	PD-Tips II, BIO-CERT, Sterile	1.0 mL	100/PK
705736	PD-Tips II, BIO-CERT, Sterile	1.25 mL	100/PK
705738	PD-Tips II, BIO-CERT, Sterile	2.5 mL	100/PK
705740	PD-Tips II, BIO-CERT, Sterile	5 mL	100/PK
705742	PD-Tips II, BIO-CERT, Sterile	10 mL	100/PK
705744	PD-Tips II, BIO-CERT, Sterile	12.5 mL	100/PK
705746	PD-Tips II, BIO-CERT, Sterile	25 mL	25/PK
705748	PD-Tips II, BIO-CERT, Sterile	50 mL	25/PK

CORNING Cryogenic Vials

46



Article-No.	Product	Unit
430658	1.2 mL External Threaded PP Cryogenic Vial, Self-Standing with Conical Bottom	500/CS
430659	2 mL External Threaded PP Cryogenic Vial, Self-Standing with Round Bottom	500/CS
430488	2 mL Internal Threaded PP Cryogenic Vial, Self-Standing with Round Bottom	500/CS

CORNING Cell Culture Dishes

47



Article-No.	Product	Unit
430165	35 mm TC-treated Culture Dish	500/CS
430166	60 mm TC-treated Culture Dish	500/CS
430167	100 mm TC-treated Culture Dish	500/CS

CORNING Stripette™ Serological Pipets

48



Article-No.	Product	Unit
4487	5 mL Serological Pipets, blue	200/CS
4488	10 mL Serological Pipets, orange	200/CS
4489	25 mL Serological Pipets, red	200/CS
4490	50 mL Serological Pipets, black	100/CS

CORNING 50 mL Reagent Reservoirs

49



Article-No.	Product	Unit
4870	50 mL Reagent Reservoir, Sterile	200/CS

CORNING Centrifuge Tubes

50



Article-No.	Product	Unit
430790	15 mL PP Centrifuge Tubes, Rack, with CentriStar™ Cap	500/CS
430791	15 mL PP Centrifuge Tubes, Bulk, with CentriStar™ Cap	500/CS
430828	50 mL PP Centrifuge Tubes, Conical Bottom with CentriStar™ Cap, Rack	500/CS
430829	50 mL PP Centrifuge Tubes, Conical Bottom with CentriStar™ Cap, Bulk	500/CS
430291	50 mL PP Centrifuge Tubes, Conical Bottom with Plug Seal Cap, Bulk	500/CS
430921	50 mL PP Centrifuge Tubes, Self-Standing with CentriStar™ Cap, Bulk	500/CS

CORNING Bottle Top Vacuum Filter

51



Article-No.	Product	Unit
430513	500 mL Bottle Top Vacuum Filter, CA, 0.22 µm, 45 mm, Sterile	12/CS
431118	500 mL Bottle Top Vacuum Filter, PES, 0.22 µm, 45 mm, Sterile	12/CS
431174	1000 mL Bottle Top Vacuum Filter, PES, 0.22 µm, 45 mm, Sterile	12/CS

COUNTSTAR Mira Series - Cell Analyzer

52



Article-No.	Product	Type
IN040101-E	Countstar Mira BF	Brightfield Cell Analyzer
IN050101-E	Countstar Mira FL	Fluorescence Cell Analyzer
IN050201-E	Countstar Mira FL Plus	Automated Fluorescence Cell Analyzer
IN050301-E	Countstar Mira FL Pro	Microbial Cell Analyzer
IN090101-E	Countstar Mira HT	High-throughput Cell Analyzer

COUNTSTAR Castor Series - High-throughput Cell Analyzer

53



Article-No.	Product	Type
IN060103	Countstar Castor X1	High-throughput Image Cell Analyzer
IN100103	Countstar Castor S1	High-throughput intelligent 3D Cell Analyzer

COUNTSTAR Hvita Series - Cell Culture System

54



Article-No.	Product	Type
P020700001-E	Countstar Hvita	3D Live Cell Perfusion Culture System

CELLMEDIA Thermoshaker

55



Article-No.	Product	Temperature range
111000	Thermoshaker basic, without block, with heating functionality	5 °C above room temperature up to 100 °C, adjustable in 0.1 °C steps
112000	Thermoshaker pro, without block, with heating and cooling functionality	20 °C* below room temperature (± 2 °C) up to 100 °C, adjustable in 0.1 °C steps

CELLMEDIA Blocks for Thermoshaker

56



Article-No.	Product	Max. rpm
190010	Exchangeable Block A - 96 PCR tubes, 0.2 ml	1500 max. rpm ⁻¹
190020	Exchangeable Block B - 54x0.5 ml reaction tubes	1500 max. rpm ⁻¹
190030	Exchangeable Block C - 35x1.5 ml reaction tubes	1500 max. rpm ⁻¹
190040	Exchangeable Block D - 35x2.0 ml reaction tubes	1500 max. rpm ⁻¹
190050	Exchangeable Block E - 15x0.5 ml/20x1.5 ml reaction tubes	1500 max. rpm ⁻¹
190060	Exchangeable Block F - 24 tubes, ø 12 mm	1200 max. rpm ⁻¹
190070	Exchangeable Block G - 12x15 ml Falcon tubes	750 max. rpm ⁻¹
190080	Exchangeable Block H - 6x50 ml Falcon tubes	750 max. rpm ⁻¹
190090	Exchangeable Block I - Water bath block, 103x67x29 mm	300 max. rpm ⁻¹
190100	Exchangeable Block J - Microtiter plate	1500 max. rpm ⁻¹
190110	Exchangeable Block K - 24 tubes, ø 14 mm	1200 max. rpm ⁻¹
190120	Exchangeable Block L - Deepwell plate	900 max. rpm ⁻¹
190130	Exchangeable Block M - 15x5 ml reaction tubes	1200 max. rpm ⁻¹

CELLMEDIA Fluid Aspiration Systems

57



Article-No.	Product	Suction performance (serological pipette)
284400-pro	Aspir8 basic L4 pro fluid aspiration system (without pump), 4 L	depending on external vacuum pump
284300-pro	Aspir8 compact VCF4 pro fluid aspiration system (with pump), 4 L	< up to 3 seconds

DURAN Beaker, low form, with spout

58



Article-No.	Product	Volume	Unit
211060701	Beaker low 5 mL	5 mL	10/PK
211060804	Beaker low 10 mL	10 mL	10/PK
211061406	Beaker low 25 mL	25 mL	10/PK
211061706	Beaker low 50 mL	25 mL	10/PK
211062402	Beaker low 100 mL	25 mL	10/PK
211062908	Beaker low 150 mL	25 mL	10/PK
211063604	Beaker low 250 mL	25 mL	10/PK
211064103	Beaker low 400 mL	25 mL	10/PK
211064806	Beaker low 600 mL	25 mL	10/PK
211065305	Beaker low 800 mL	25 mL	10/PK
211065408	Beaker low 1 L	25 mL	10/PK
211066301	Beaker low 2 L	25 mL	10/PK
211066807	Beaker low 3 L	25 mL	4/PK
211067306	Beaker low 4 L	25 mL	1/EA
211068602	Beaker low 10 L	25 mL	1/EA

DURAN Beaker, high form

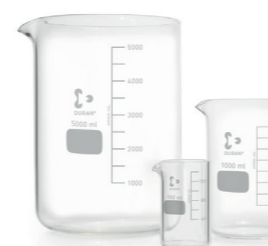
59



Article-No.	Product	Volume	Unit
211161704	Beaker tall 50 mL, with spout	50 mL	10/PK
211162409	Beaker tall 100 mL, with spout	100 mL	10/PK
211162906	Beaker tall 150 mL, with spout	150 mL	10/PK
211163602	Beaker tall 250 mL, with spout	250 mL	10/PK
211164101	Beaker tall 400 mL, with spout	400 mL	10/PK
211164804	Beaker tall 600 mL, with spout	600 mL	10/PK
211165303	Beaker tall 800 mL, with spout	800 mL	10/PK
211165406	Beaker tall 1 L, with spout	1000 mL	10/PK
211166308	Beaker tall 2 L, with spout	2000 mL	10/PK
211166805	Beaker tall 3 L, with spout	3000 mL	2/PK
211171705	Beaker tall, w/o spout, 50 mL Ø 38 x h70 mm	50 mL	10/PK
211172401	Beaker tall, w/o spout, 100 mL Ø 48 x h80 mm	100 mL	10/PK
211172907	Beaker tall, w/o spout, 150 mL Ø 54 x h95 mm	150 mL	4/PK
211173603	Beaker tall, w/o spout, 250 mL Ø 60 x h120 mm	250 mL	10/PK
211174102	Beaker tall, w/o spout, 400 mL Ø 70 x h130 mm	400 mL	10/PK
211174805	Beaker tall, w/o spout, 600 mL Ø 80 x h150 mm	600 mL	10/PK
211175407	Beaker tall, w/o spout, 1000 mL Ø 95 x h180 mm	1000 mL	10/PK

DURAN Beaker, heavy-wall

60



Article-No.	Product	Volume	Unit
211312409	Beaker heavy-wall 100 mL	100 mL	10/PK
211312906	Beaker heavy-wall 150 mL	150 mL	10/PK
211313602	Beaker heavy-wall 250 mL	250 mL	10/PK
211314401	Beaker heavy-wall 500 mL	500 mL	10/PK
211315406	Beaker heavy-wall 1 L	1000 mL	10/PK
211316308	Beaker heavy-wall 2 L	2000 mL	10/PK
211316805	Beaker heavy-wall 3 L	3000 mL	10/PK
211317304	Beaker heavy-wall 5 L	5000 mL	1/EA
211318609	Beaker heavy-wall 10 L, without graduation	10000 mL	1/EA
211318806	Beaker heavy-wall 15 L, without graduation	15000 mL	1/EA
211319108	Beaker heavy-wall 20 L, without graduation	20000 mL	1/EA

DURAN Round Bottom Flask

61



Article-No.	Product	Volume	Unit
217412407	Flask, round bottom, wide neck, 100 mL	100 mL	10/PK
217413609	Flask, round bottom, wide neck, 250 mL	250 mL	10/PK
217414408	Flask, round bottom, wide neck, 500 mL	500 mL	10/PK
217415404	Flask, round bottom, wide neck, 1000 mL	1000 mL	10/PK
217212402	Flask, round bottom, narrow neck, 100 mL	100 mL	10/PK
217213604	Flask, round bottom, narrow neck, 250 mL	250 mL	10/PK
217214403	Flask, round bottom, narrow neck, 500 mL	500 mL	10/PK
217215408	Flask, round bottom, narrow neck, 1000 mL	1000 mL	10/PK

DURAN Flat Bottom Flask

62



Article-No.	Product	Volume	Unit
217312409	Flask, Flat bottom, wide neck, 100 mL	100 mL	10/PK
217313602	Flask, Flat bottom, wide neck, 250 mL	250 mL	10/PK
217314401	Flask, Flat bottom, wide neck, 500 mL	500 mL	10/PK
217315406	Flask, Flat bottom, wide neck, 1000 mL	1000 mL	10/PK
217112404	Flask, Flat bottom, narrow neck, 100 mL	100 mL	10/PK
217113606	Flask, Flat bottom, narrow neck, 250 mL	250 mL	10/PK
217114405	Flask, Flat bottom, narrow neck, 500 mL	500 mL	10/PK
217115401	Flask, Flat bottom, narrow neck, 1000 mL	1000 mL	10/PK

DURAN Erlenmeyer Flask, narrow neck

63



Article-No.	Product	Volume	Unit
212161407	Erlenmeyer flask 25 mL	25 mL	10/PK
212161707	Erlenmeyer flask 50 mL	20 mL	10/PK
212162403	Erlenmeyer flask 100 mL	100 mL	10/PK
212162806	Erlenmeyer flask 125 mL	125 mL	10/PK
212163202	Erlenmeyer flask 200 mL	200 mL	10/PK
212163605	Erlenmeyer flask 250 mL	250 mL	10/PK
212163905	Erlenmeyer flask 300 mL	300 mL	10/PK
212164404	Erlenmeyer flask 500 mL	500 mL	10/PK
212165306	Erlenmeyer flask 800 mL	800 mL	10/PK
212165409	Erlenmeyer flask 1 L	1000 mL	10/PK
212166302	Erlenmeyer flask 2 L	2000 mL	10/PK
212166808	Erlenmeyer flask 3 L	3000 mL	2/PK
212167307	Erlenmeyer flask 5 L	5000 mL	1/EA

ELGA PURELAB Quest

64



Article-No.	Product	Labwater Type	Unit
PQDIXM1	PURELAB Quest*	Type I, II and III	1/EA
PQDIUVM1	PURELAB Quest UV*	Type I, II and III	1/EA

- The compact and cost-effective system produces Type I, II & III laboratory water directly from drinking water.
- Ideal for laboratories with limited space and budget, but still need ultrapure water of impeccable quality.

ELGA PURELAB Flex

65



Article-No.	Product	Labwater Type	Unit
PF1-M3	PURELAB flex 1**	Type I	1/EA
PF2-M3	PURELAB flex 2**	Type I	1/EA
PF3-M3	PURELAB flex 3*	Type I	1/EA
PF3+-M3	PURELAB flex 3+*	Type I	1/EA

- Intuitive to use and proven ultrapure water system for the production of Type I ultrapure water from pretreated water or directly from drinking water.
- For many applications - from just one system.

ELGA PURELAB Chorus

66



Article-No.	Product	Labwater Type	Unit
PC1LSCXM2	PURELAB Chorus 1 Lifescience **	Type I	1/EA
PC1ANRXM2	PURELAB Chorus 1 Analytical Research **	Type I	1/EA
PC110COBPM1	PURELAB Chorus 1 Complete 10 l/h, BP *	Type I	1/EA
VCLSDM1	PURELAB Pharma Compliance *	Type I	1/EA
PC210EUBPM1	PURELAB Chorus 2+ (RO/EDI/UV) 10 l/h, BP *	Type II+	1/EA
PC210DUBPM1	PURELAB Chorus 2+ (RO/DI/UV) 10 l/h, BP *	Type II+	1/EA
PC210DIBPM3	PURELAB Chorus 2 (RO/DI) 10 l/h, BP *	Type II	1/EA
RO310BPM3	PURELAB Chorus 3 (RO) 10 l/h, BP *	Type III	1/EA

- With the modular systems of the PURELAB Chorus series, you can assemble customized solutions: tailored to your applications, your budget, and your space in the laboratory.

* Feedwater: potable water
** Feedwater: pre-treated water

EPPENDORF Research® plus, single-channel pipette, variable volume

67



Article-No.	Product	Volume	Color	Unit
3123 000 012	Research plus, 1-channel	0.1-2.5 µL	dark gray	1/EA
3123 000 020	Research plus, 1-channel	0.5-10 µL	medium gray	1/EA
3123 000 098	Research plus, 1-channel	2-20 µL	light gray	1/EA
3123 000 039	Research plus, 1-channel	2-20 µL	yellow	1/EA
3123 000 047	Research plus, 1-channel	10-100 µL	yellow	1/EA
3123 000 055	Research plus, 1-channel	20-200 µL	yellow	1/EA
3123 000 101	Research plus, 1-channel	30-300 µL	orange	1/EA
3123 000 063	Research plus, 1-channel	100-1000 µL	blue	1/EA
3123 000 144	Research plus, 1-channel	0.25-2.5 mL	red	1/EA
3123 000 071	Research plus, 1-channel	0.5-5 mL	violet	1/EA
3123 000 080	Research plus, 1-channel	1-10 mL	turquoise	1/EA

Bundles

Article-No.	Product	Unit
3123 000 900	Research plus, 3-pack, option 1: 0.5-10 µL, 10-100 µL, 100-1.000 µL	1/SET
3123 000 918	Research plus, 3-pack, option 2: 2-20 µL, 20-200 µL, 100-1.000 µL	1/SET
3123 000 926	Research plus, 3-pack, Option 3, 100-1.000 µL, 0.5-5 mL, 1-10 mL	1/SET
3123 000 950	Research plus, 4-pack, 0.1-2.5 µL, 2-20 µL, 20-200 µL, 100-1000 µL	1/SET
3123 000 942	Research plus, 6-pack, 0.1-2.5 µL, 0.5-10 µL, 2-20 µL, 10-100 µL, 20-200 µL, 100-1000 µL	1/SET

EPPENDORF Research® plus Basic, single-channel pipette, variable volume

68



Article-No.	Product	Volume	Color	Unit
3123 000 217	Research plus Basic, 1-channel	0.1-2.5 µL	dark gray	1/EA
3123 000 225	Research plus Basic, 1-channel	0.5-10 µL	medium gray	1/EA
3123 000 233	Research plus Basic, 1-channel	2-20 µL	yellow	1/EA
3123 000 241	Research plus Basic, 1-channel	10-100 µL	yellow	1/EA
3123 000 250	Research plus Basic, 1-channel	20-200 µL	yellow	1/EA
3123 000 268	Research plus Basic, 1-channel	100-1000 µL	blue	1/EA
3123 000 276	Research plus Basic, 1-channel	0.5-5 mL	purple	1/EA
3123 000 284	Research plus Basic, 1-channel	1-10 mL	turquoise	1/EA

EPPENDORF Research® plus, multi-channel pipette, variable volume

69



Article-No.	Product	Volume	Color	Unit
3125 000 010	Research plus, 8-channel	0.5-10 µL	medium gray	1/EA
3125 000 036	Research plus, 8-channel	10-100 µL	yellow	1/EA
3125 000 052	Research plus, 8-channel	30-300 µL	orange	1/EA
3125 000 214	Research plus, 8-channel	120-1200 µL	dark green	1/EA
3125 000 028	Research plus, 12-channel	0.5-10 µL	medium gray	1/EA
3125 000 044	Research plus, 12-channel	10-100 µL	yellow	1/EA
3125 000 060	Research plus, 12-channel	30-300 µL	orange	1/EA
3125 000 222	Research plus, 12-channel	120-1200 µL	dark green	1/EA
3125 000 079	Research plus, 16-channel	1-20 µL	light pink	1/EA
3125 000 095	Research plus, 16-channel	5-100 µL	light yellow	1/EA
3125 000 087	Research plus, 24-channel	1-20 µL	light pink	1/EA
3125 000 109	Research plus, 24-channel	5-100 µL	light yellow	1/EA

EPPENDORF Reference® 2, single-button pipette, single-channel, variable volume

70



Article-No.	Product	Volume	Color	Unit
4924 000 010	Reference 2, 1-channel	0.1-2.5 µL	dark gray	1/EA
4924 000 029	Reference 2, 1-channel	0.5-10 µL	medium gray	1/EA
4924 000 037	Reference 2, 1-channel	2-20 µL	light gray	1/EA
4924 000 045	Reference 2, 1-channel	2-20 µL	yellow	1/EA
4924 000 053	Reference 2, 1-channel	10-100 µL	yellow	1/EA
4924 000 061	Reference 2, 1-channel	20-200 µL	yellow	1/EA
4924 000 070	Reference 2, 1-channel	30-300 µL	orange	1/EA
4924 000 088	Reference 2, 1-channel	100-1000 µL	blue	1/EA
4924 000 096	Reference 2, 1-channel	0.25-2.5 mL	red	1/EA
4924 000 100	Reference 2, 1-channel	0.5-5 mL	violet	1/EA
4924 000 118	Reference 2, 1-channel	1-10 mL	turquoise	1/EA

Bundles

Article-No.	Product	Unit
3123 000 908	Reference 2, 3-pack, option 1: 0.5-10 µL, 10-100 µL, 100-1000 µL	1/SET
3123 000 916	Reference 2, 3-pack, option 2: 2-20 µL, 20-200 µL, 100-1000 µL	1/SET
3123 000 924	Reference 2, 3-pack, option 3: 100-1000 µL, 0.5-5 mL, 1-10 mL	1/SET
4924 000 940	Reference 2, 6-pack, 0.1-2.5 µL, 0.5-10 µL, 2-20 µL, 10-100 µL, 20-200 µL, 100-1000 µL	1/SET

EPPENDORF Reference® 2, single-button pipette, multi-channel, variable volume

71



Article-No.	Product	Volume	Color	Unit
4926 000 018	Reference 2, 8-channel	0.5-10 µL	medium gray	1/EA
4926 000 034	Reference 2, 8-channel	10-100 µL	yellow	1/EA
4926 000 050	Reference 2, 8-channel	30-300 µL	orange	1/EA
4926 000 026	Reference 2, 12-channel	0.5-10 µL	medium gray	1/EA
4926 000 042	Reference 2, 12-channel	10-100 µL	yellow	1/EA
4926 000 069	Reference 2, 12-channel	30-300 µL	orange	1/EA

EPPENDORF Xplorer®, single-channel electronic pipette

72



Article-No.	Product	Volume	Color	Unit
4861 000 015	Xplorer, 1-channel	0.5-10 µL	medium gray	1/EA
4861 000 017	Xplorer, 1-channel	1-200 µL	light gray	1/EA
4861 000 023	Xplorer, 1-channel	5-100 µL	yellow	1/EA
4861 000 027	Xplorer, 1-channel	10-200 µL	yellow	1/EA
4861 000 031	Xplorer, 1-channel	15-300 µL	orange	1/EA
4861 000 040	Xplorer, 1-channel	50-1000 µL	blue	1/EA
4861 000 044	Xplorer, 1-channel	0.1-2.5 mL	red	1/EA
4861 000 058	Xplorer, 1-channel	0.2-5 mL	violet	1/EA
4861 000 066	Xplorer, 1-channel	0.5-10 mL	turquoise	1/EA

EPPENDORF Xplorer®, multi-channel electronic pipette

73



Article-No.	Product	Volume	Color	Unit
4861 000 104	Xplorer, 8-channel	0.5-10 µL	medium gray	1/EA
4861 000 120	Xplorer, 8-channel	5-100 µL	yellow	1/EA
4861 000 147	Xplorer, 8-channel	15-300 µL	orange	1/EA
4861 000 163	Xplorer, 8-channel	50-1200 µL	green	1/EA
4861 000 112	Xplorer, 12-channel	0.5-10 µL	medium gray	1/EA
4861 000 139	Xplorer, 12-channel	5-100 µL	yellow	1/EA
4861 000 155	Xplorer, 12-channel	15-300 µL	orange	1/EA
4861 000 171	Xplorer, 12-channel	50-1200 µL	green	1/EA

EPPENDORF Xplorer® plus, single-channel electronic pipette

74



Article-No.	Product	Volume	Color	Unit
4861 000 708	Xplorer plus, 1-channel	0.5-10 µL	medium gray	1/EA
4861 000 710	Xplorer plus, 1-channel	1-20 µL	light gray	1/EA
4861 000 716	Xplorer plus, 1-channel	5-100 µL	yellow	1/EA
4861 000 720	Xplorer plus, 1-channel	10-200 µL	yellow	1/EA
4861 000 724	Xplorer plus, 1-channel	15-300 µL	orange	1/EA
4861 000 732	Xplorer plus, 1-channel	50-1000 µL	blue	1/EA
4861 000 736	Xplorer plus, 1-channel	0.1-2.5 mL	red	1/EA
4861 000 740	Xplorer plus, 1-channel	0.2-5 mL	violet	1/EA
4861 000 759	Xplorer plus, 1-channel	0.5-10 mL	turquoise	1/EA

EPPENDORF Xplorer® plus, multi-channel electronic pipette

75



Article-No.	Product	Volume	Color	Unit
4861 000 767	Xplorer plus, 8-channel	0.5-10 µL	medium gray	1/EA
4861 000 783	Xplorer plus, 8-channel	5-100 µL	yellow	1/EA
4861 000 805	Xplorer plus, 8-channel	15-300 µL	orange	1/EA
4861 000 821	Xplorer plus, 8-channel	50-1200 µL	green	1/EA
4861 000 775	Xplorer plus, 12-channel	0.5-10 µL	medium gray	1/EA
4861 000 791	Xplorer plus, 12-channel	5-100 µL	yellow	1/EA
4861 000 813	Xplorer plus, 12-channel	15-300 µL	orange	1/EA
4861 000 830	Xplorer plus, 12-channel	50-1200 µL	green	1/EA
4861 000 778	Xplorer plus, 16-channel	1-20 µL	light pink	1/EA
4861 000 792	Xplorer plus, 16-channel	5-100 µL	light yellow	1/EA
4861 000 779	Xplorer plus, 24-channel	1-20 µL	light pink	1/EA
4861 000 793	Xplorer plus, 24-channel	5-100 µL	light yellow	1/EA

EPPENDORF Xplorer® plus Move It® - Adjustable tip spacing pipette

76



Article-No.	Product	Volume	Color	Unit
4861 000 816	Xplorer plus, Move It, 4-channel	15-300 µL	orange	1/EA
4861 000 833	Xplorer plus, Move It, 4-channel	50-1200 µL	green	1/EA
4861 000 817	Xplorer plus, Move It, 6-channel	15-300 µL	orange	1/EA
4861 000 834	Xplorer plus, Move It, 6-channel	50-1200 µL	green	1/EA
4861 000 781	Xplorer plus, Move It, 8-channel	1-20 µL	light pink	1/EA
4861 000 794	Xplorer plus, Move It, 8-channel	5-100 µL	light yellow	1/EA
4861 000 818	Xplorer plus, Move It, 8-channel	15-300 µL	orange	1/EA
4861 000 835	Xplorer plus, Move It, 8-channel	50-1200 µL	green	1/EA
4861 000 782	Xplorer plus, Move It, 12-channel	1-20 µL	light pink	1/EA
4861 000 795	Xplorer plus, Move It, 12-channel	5-100 µL	light yellow	1/EA

EPPENDORF Multipette® E3/E3x - Electronic positive displacement pipette

77



Article-No.	Product	Volume	Unit
4987 000 010	Multipette E3	1 µL - 50 mL	1/EA
4987 000 371	Multipette E3 bundle with charger stand	1 µL - 50 mL	1/EA
4987 000 029	Multipette E3x	1 µL - 50 mL	1/EA
4987 000 380	Multipette E3x bundle with charger stand	1 µL - 50 mL	1/EA

EPPENDORF Multipette® M4

78



Article-No.	Product	Volume	Unit
4982 000 012	Multipette M4 Starter Kit	1 µL - 10 mL	1/EA
4982 000 314	Multipette E3 bundle with charger stand	1 µL - 10 mL	1/EA

EPPENDORF Easypet® 3 - Electronic pipette controller

79



Article-No.	Product	Volume	Unit
4430 000 018	Easypet 3	0.1 mL - 100 mL	1/EA

EPPENDORF Pipette Carousel 2

80



Article-No.	Product	Unit
3116 000 112	Pipette Holder 2, for 1 pipette	1/EA
3116 000 015	Pipette Carousel 2, with 6 pipette holders	1/EA



Article-No.	Product	Unit
0030 080 033	epT.I.P.S. BioBased, 0.1-10 µL, 34 mm	1000/PK (500 tips x 2 bag)
0030 080 041	epT.I.P.S. BioBased, 0.1-20 µL, 40 mm	1000/PK (500 tips x 2 bag)
0030 080 050	epT.I.P.S. BioBased, 0.5-20 µL L, 46 mm	1000/PK (500 tips x 2 bag)
0030 080 068	epT.I.P.S. BioBased, 2-200 µL, 53 mm	1000/PK (500 tips x 2 bag)
0030 080 076	epT.I.P.S. BioBased, 20-300 µL, 55 mm	1000/PK (500 tips x 2 bag)
0030 080 084	epT.I.P.S. BioBased, 50-1000 µL, 71 mm	1000/PK (500 tips x 2 bag)
0030 080 092	epT.I.P.S. BioBased, 50-1250 µL, 76 mm	1000/PK (500 tips x 2 bag)
0030 080 106	epT.I.P.S. BioBased, 50-1250 µL L, 103 mm	1000/PK (250 tips x 4 bag)
0030 080 114	epT.I.P.S. BioBased, 0.1-2.5 mL, 115 mm	500/PK (100 tips x 5 bag)
0030 080 122	epT.I.P.S. BioBased, 0.1-5 mL, 120 mm	500/PK (100 tips x 5 bag)
0030 080 130	epT.I.P.S. BioBased, 0.2-5 mL, 175 mm	300/PK (100 tips x 3 bag)

EPPENDORF epT.I.P.S.® - pipette tips, standard/bulk



Article-No.	Product	Unit
0030 000 811	epT.I.P.S. Standard, 0.1-10 µL, 34 mm, colorless tips	1000/PK (500 tips x 2 bag)
0030 000 838	epT.I.P.S. Standard, 0.1-20 µL, 40 mm, colorless tips	1000/PK (500 tips x 2 bag)
0030 000 854	epT.I.P.S. Standard, 0.5-20 µL, 46 mm, colorless tips	1000/PK (500 tips x 2 bag)
0030 000 889	epT.I.P.S. Standard, 2-200 µL, 53 mm, colorless tips	1000/PK (500 tips x 2 bag)
0030 000 870	epT.I.P.S. Standard, 2-200 µL, 53 mm, yellow tips	1000/PK (500 tips x 2 bag)
0030 000 900	epT.I.P.S. Standard, 20-300 µL, 55 mm, colorless tips	1000/PK (500 tips x 2 bag)
0030 000 897	epT.I.P.S. Standard, 20-300 µL, 55 mm, yellow tips	1000/PK (500 tips x 2 bag)
0030 000 927	epT.I.P.S. Standard, 50-1000 µL, 71 mm, colorless tips	1000/PK (500 tips x 2 bag)
0030 000 919	epT.I.P.S. Standard, 50-1000 µL, 71 mm, blue tips	1000/PK (500 tips x 2 bag)
0030 000 935	epT.I.P.S. Standard, 50-1250 µL, 76 mm, colorless tips	1000/PK (250 tips x 4 bag)
0030 000 730	epT.I.P.S. Standard, 50-1250 µL, 103 mm, colorless tips	1000/PK (500 tips x 2 bag)
0030 000 951	epT.I.P.S. Standard, 0.1-2.5 mL, 115 mm, colorless tips	500/PK (100 tips x 5 bag)
0030 000 978	epT.I.P.S. Standard, 0.1-5 mL, 120 mm, colorless tips	500/PK (100 tips x 5 bag)
0030 000 650	epT.I.P.S. Standard, 0.2-5 mL, 175 mm, colorless tips	300/PK (100 tips x 3 bag)
0030 000 765	epT.I.P.S. Standard, 0.5-10 mL, 165 mm, colorless tips	200/PK (100 tips x 2 bag)
0030 000 781	epT.I.P.S. Standard, 0.5-10 mL, 243 mm, colorless tips	200/PK (100 tips x 2 bag)



Article-No.	Product	Unit
0030 076 125	epT.I.P.S. Box 2.0, 0.1-10 µL, 34 mm	96 tips/Box
0030 076 133	epT.I.P.S. Box 2.0, 0.1-20 µL, 40 mm	96 tips/Box
0030 076 141	epT.I.P.S. Box 2.0, 0.5-20 µL, 46 mm	96 tips/Box
0030 076 150	epT.I.P.S. Box 2.0, 2-200 µL, 53 mm	96 tips/Box
0030 076 168	epT.I.P.S. Box 2.0, 20-300 µL, 55 mm	96 tips/Box
0030 076 176	epT.I.P.S. Box 2.0, 50-1000 µL, 71 mm	96 tips/Box
0030 076 184	epT.I.P.S. Box 2.0, 50-1250 µL, 76 mm	96 tips/Box
0030 076 192	epT.I.P.S. Box 2.0, 50-1250 µL, 103 mm	96 tips/Box
0030 076 206	epT.I.P.S. Box 2.0, 0.1-2.5 mL, 115 mm	48 tips/Box
0030 076 214	epT.I.P.S. Box 2.0, 0.1-5 mL, 120 mm	24 tips/Box

Rack

Article-No.	Product	Unit
0030 075 226	epT.I.P.S. Racks (Biopur®), 0.1-20 µL, 40 mm	480 tips (96 tips x 5 racks)
0030 075 234	epT.I.P.S. Racks (Biopur®), 2-200 µL, 53 mm	480 tips (96 tips x 5 racks)
0030 075 242	epT.I.P.S. Racks (Biopur®), 20-300 µL, 55 mm	480 tips (96 tips x 5 racks)
0030 075 250	epT.I.P.S. Racks (Biopur®), 50-1000 µL, 71 mm	480 tips (96 tips x 5 racks)
0030 075 269	epT.I.P.S. Racks (Biopur®), 50-1250 µL, 76 mm	480 tips (96 tips x 5 racks)
0030 075 293	epT.I.P.S. Racks (Biopur®), 0.1-5 mL, 120 mm	120 tips (24 tips x 5 racks)
0030 075 315	epT.I.P.S. Racks (Biopur®), 0.5-10 mL, 165 mm	120 tips (24 tips x 5 racks)

EPPENDORF epT.I.P.S Reloads, Eppendorf Quality



Article-No.	Product	Unit
0030 073 371	epT.I.P.S.® Reloads, 0.1-10 µL, 34 mm	960/PK (96 tips x 10 trays)
0030 073 398	epT.I.P.S.® Reloads, 0.1-20 µL, 40 mm	960/PK (96 tips x 10 trays)
0030 073 410	epT.I.P.S.® Reloads, 0.5-20 µL, 46 mm	960/PK (96 tips x 10 trays)
0030 073 436	epT.I.P.S.® Reloads, 2-200 µL, 53 mm	960/PK (96 tips x 10 trays)
0030 073 452	epT.I.P.S.® Reloads, 20-300 µL, 55 mm	960/PK (96 tips x 10 trays)
0030 073 479	epT.I.P.S.® Reloads, 50-1000 µL, 71 mm	960/PK (96 tips x 10 trays)
0030 073 495	epT.I.P.S.® Reloads, 50-1250 µL, 76 mm	960/PK (96 tips x 10 trays)
0030 073 517	epT.I.P.S.® Reloads, 0.1-2.5 mL	480/PK (48 tips x 10 trays)

All Reload tips also available in PCR clean

EPPENDORF Combitips® advanced for Multipipette®, Eppendorf Quality



Article-No.	Product	Unit
0030 089 405	Combitips advanced, 0.1 mL	100/PK (25 tips x 4 bags)
0030 089 413	Combitips advanced, 0.2 mL	100/PK (25 tips x 4 bags)
0030 089 421	Combitips advanced, 0.5 mL	100/PK (25 tips x 4 bags)
0030 089 430	Combitips advanced, 1.0 mL	100/PK (25 tips x 4 bags)
0030 089 448	Combitips advanced, 2.5 mL	100/PK (25 tips x 4 bags)
0030 089 456	Combitips advanced, 5.0 mL	100/PK (25 tips x 4 bags)
0030 089 464	Combitips advanced, 10 mL	100/PK (25 tips x 4 bags)
0030 089 472	Combitips advanced, 25 mL	100/PK (25 tips x 4 bags)
0030 089 480	Combitips advanced, 50 mL	100/PK (25 tips x 4 bags)
0030 089 396	Combitips advanced tips assortment pack	1/SET

EPPENDORF Combitips® advanced for Multipette®, Biopur®

86



Article-No.	Product	Unit
0030 089 618	Combitips advanced, Biopur, 0.1 mL	100/PK
0030 089 626	Combitips advanced, Biopur, 0.2 mL	100/PK
0030 089 634	Combitips advanced, Biopur, 0.5 mL	100/PK
0030 089 642	Combitips advanced, Biopur, 1.0 mL	100/PK
0030 089 650	Combitips advanced, Biopur, 2.5 mL	100/PK
0030 089 669	Combitips advanced, Biopur, 5.0 mL	100/PK
0030 089 677	Combitips advanced, Biopur, 10 mL	100/PK
0030 089 685	Combitips advanced, Biopur, 25 mL	100/PK
0030 089 693	Combitips advanced, Biopur, 50 mL	100/PK

EPPENDORF ep Dualfilter T.I.P.S.® SealMax® - Self-sealing pipette tip

87



Article-No.	Product	Unit
0030 078 691	ep Dualfilter T.I.P.S. SealMax, 0.1-10 µL, 34 mm	960/PK (96 tips x 10 racks)
0030 078 705	ep Dualfilter T.I.P.S. SealMax, 0.5-20 µL, 46 mm	960/PK (96 tips x 10 racks)
0030 078 713	ep Dualfilter T.I.P.S. SealMax, 2-100 µL, 53 mm	960/PK (96 tips x 10 racks)
0030 078 721	ep Dualfilter T.I.P.S. SealMax, 2-200 µL, 55 mm	960/PK (96 tips x 10 racks)
0030 078 730	ep Dualfilter T.I.P.S. SealMax, 20-300 µL, 55 mm	960/PK (96 tips x 10 racks)
0030 078 748	ep Dualfilter T.I.P.S. SealMax, 50-1000 µL, 76 mm	960/PK (96 tips x 10 racks)

EPPENDORF ep Dualfilter T.I.P.S.®, Filter pipette tips

88



Article-No.	Product	Unit
0030 078 500	ep Dualfilter T.I.P.S., 0.1 - 10 µL S, 34 mm	960/PK (96 tips x 10 racks)
0030 078 519	ep Dualfilter T.I.P.S., 0.1 - 10 µL M, 40 mm	960/PK (96 tips x 10 racks)
0030 078 527	ep Dualfilter T.I.P.S., 0.5 - 20 µL L, 46 mm	960/PK (96 tips x 10 racks)
0030 078 535	ep Dualfilter T.I.P.S., 2 - 20 µL, 53 mm	960/PK (96 tips x 10 racks)
0030 078 543	ep Dualfilter T.I.P.S., 2 - 100 µL, 53 mm	960/PK (96 tips x 10 racks)
0030 078 551	ep Dualfilter T.I.P.S., 2 - 200 µL, 55 mm	960/PK (96 tips x 10 racks)
0030 078 560	ep Dualfilter T.I.P.S., 20 - 300 µL, 55 mm	960/PK (96 tips x 10 racks)
0030 078 578	ep Dualfilter T.I.P.S., 50 - 1000 µL, 76 mm	960/PK (96 tips x 10 racks)
0030 078 594	ep Dualfilter T.I.P.S., 50 - 1250 µL, 103 mm	480/PK (96 tips x 5 racks)
0030 078 586	ep Dualfilter T.I.P.S., 0.1 - 2.5 mL, 115 mm	240/PK (48 tips x 5 racks)
0030 078 616	ep Dualfilter T.I.P.S., 0.1 - 5 mL, 120 mm	120/PK (24 tips x 5 racks)
0030 078 624	ep Dualfilter T.I.P.S., 0.2 - 5 mL, 175 mm	120/PK (24 tips x 5 racks)
0030 078 598	ep Dualfilter T.I.P.S., 0.5 - 10 mL L, 243 mm	100/PK (individually packed)
0030 078 810	ep Dualfilter T.I.P.S., 0.1 - 10 µL, forensic DNA grade	960/PK (96 tips x 10 racks)
0030 078 829	ep Dualfilter T.I.P.S., 2 - 20 µL, forensic DNA grade	960/PK (96 tips x 10 racks)
0030 078 837	ep Dualfilter T.I.P.S., 2 - 200 µL, forensic DNA grade	960/PK (96 tips x 10 racks)
0030 078 845	ep Dualfilter T.I.P.S., 50 - 1000 µL, forensic DNA grade	960/PK (96 tips x 10 racks)

EPPENDORF Safe-Lock Tubes, Microtubes

89



Article-No.	Product	Color	Unit
0030 121 023	Eppendorf Safe-Lock Tubes, 0.5 mL	colorless*	500/PK
0030 121 708	Eppendorf Safe-Lock Tubes, 0.5 mL, (5 colors á 100 PCS)	assorted colors	500/PK
0030 121 570	Eppendorf Safe-Lock Tubes, 0.5 mL, Biopur®	colorless	50/PK
0030 123 603	Eppendorf Safe-Lock Tubes, 2.0 mL, Forensic DNA Grade	colorless	500/PK
0030 121 155	Eppendorf Safe-Lock Tubes, 0.5 mL, PCR clean	amber	500/PK
0030 123 301	Eppendorf Safe-Lock Tubes, 0.5 mL, PCR clean	colorless	500/PK
0030 120 086	Eppendorf Safe-Lock Tubes, 1.5 mL	colorless*	1000/PK
0030 121 694	Eppendorf Safe-Lock Tubes, 1.5 mL, (5 colors á 200 PCS)	assorted colors	1000/PK
0030 121 589	Eppendorf Safe-Lock Tubes, 1.5 mL, Biopur®	colorless	100/PK
0030 121 191	Eppendorf Safe-Lock Tubes, 1.5 mL, PCR clean	amber	1000/PK
0030 123 328	Eppendorf Safe-Lock Tubes, 1.5 mL, PCR clean	colorless	1000/PK
0030 120 094	Eppendorf Safe-Lock Tubes, 2.0 mL	colorless*	1000/PK
0030 121 686	Eppendorf Safe-Lock Tubes, 2.0 mL, (5 colors á 200 PCS)	assorted colors	1000/PK
0030 121 597	Eppendorf Safe-Lock Tubes, 2.0 mL, Biopur®	colorless	100/PK
0030 123 620	Eppendorf Safe-Lock Tubes, 2.0 mL, Forensic DNA Grade	colorless	500/PK
0030 120 248	Eppendorf Safe-Lock Tubes, 2.0 mL, PCR clean	amber	1000/PK
0030 123 344	Eppendorf Safe-Lock Tubes, 2.0 mL, PCR clean	colorless	1000/PK

EPPENDORF Tubes® 5.0 mL, Microtubes

90



Article-No.	Product	Color	Unit
0030 119 401	Eppendorf Tubes 5.0 mL with snap cap	colorless	200/PK
0030 122 305	Eppendorf Tubes 5.0 mL with screw cap	colorless	200/PK
0030 119 460	Eppendorf Tubes 5.0 mL with snap cap, PCR clean	colorless	200/PK
0030 122 313	Eppendorf Tubes 5.0 mL with screw cap, PCR clean	colorless	200/PK
0030 119 487	Eppendorf Tubes 5.0 mL with snap cap, PCR clean, steril	colorless	200/PK
0030 119 479	Eppendorf Tubes 5.0 mL with snap cap, Biopur®	colorless	50/PK
0030 119 606	Eppendorf Tubes 5.0 mL with snap cap, Forensic DNA grade	colorless	200/PK
0030 122 402	Eppendorf Tubes 5.0 mL with screw cap, Forensic DNA grade	colorless	200/PK

EPPENDORF Tubes® 3810X, Microtubes

91



Article-No.	Product	Color	Unit
0030 125 150	Eppendorf Tubes 3810X, 1.5 mL	colorless	1000/PK
0030 125 177	Eppendorf Tubes 3810X, 1.5 mL	blue	1000/PK
0030 125 185	Eppendorf Tubes 3810X, 1.5 mL	green	1000/PK
0030 125 193	Eppendorf Tubes 3810X, 1.5 mL	red	1000/PK
0030 125 207	Eppendorf Tubes 3810X, 1.5 mL	yellow	1000/PK
0030 125 215	Eppendorf Tubes 3810X, 1.5 mL, PCR clean	colorless	1000/PK

EPPENDORF Tubes® BioBased

92



Article-No.	Product	Color	Unit
0030 122 518	Eppendorf Tubes BioBased 5,0 mL, screw cap	colorless	200/PK
0030 122 526	Eppendorf Tubes BioBased 15 mL, screw cap	colorless	500/PK
0030 122 534	Eppendorf Tubes BioBased 25 mL, screw cap	colorless	200/PK
0030 122 542	Eppendorf Tubes BioBased 50 mL, screw cap	colorless	500/PK

EPENDORF CellXpert® C170i/C170 - Cell culture incubator

93

Article-No.	Product	Color	Volume
6731 000 011	CellXpert C170i, handle right side, touch interface *	4 °C above ambient to 50 °C	170 L
6734 000 011	CellXpert C170, handle right side	4 °C above ambient to 50 °C	170 L

EPENDORF CellXpert® CS220 - Stackable CO² incubator shaker

94

Article-No.	Product	Color	Volume
6740 211 010	CellXpert CS220, orbit 2.5 cm (1 in), 20-300 rpm	8 °C above ambient to 60 °C	25 x 1 L Erlenmeyer flasks
6740 212 010	CellXpert CS220, orbit 5.1 cm (2 in), 20-250 rpm	8 °C above ambient to 60 °C	25 x 1 L Erlenmeyer flasks

EPENDORF Innova® S44i - Stackable incubator shaker

95

Article-No.	Product	Temperature range	Capacity (universal platform)
S44I300001	Innova S44i, non-refrigerated, orbit 2.5 cm (1 in), 20-400 rpm	10 °C above ambient to 80 °C	20 x 1 L Erlenmeyer flasks
S44I310001	Innova S44i, refrigerated, orbit 2.5 cm (1 in), 20-400 rpm	20 °C below ambient to 80 °C (min. 4 °C)	20 x 1 L Erlenmeyer flasks
S44I311001	Innova S44i, refrigerated, orbit 2.5 cm (1 in), 20-400 rpm, photosynthetic LED light bank	20 °C below ambient to 80 °C (min. 4 °C)	20 x 1 L Erlenmeyer flasks

EPENDORF New Brunswick Innova® 44/44R - Stackable incubator shaker

96

Article-No.	Product	Temperature range	Capacity (universal platform)
M1282-0002	New Brunswick Innova 44, orbit 2.5 cm (1 in), 25-400 rpm	10 °C above ambient to 80 °C	14 x 1 L Erlenmeyer flasks
M1282-0012	New Brunswick Innova 44, orbit 5.1 cm (2 in), 25-300 rpm	10 °C above ambient to 80 °C	14 x 1 L Erlenmeyer flasks
M1282-0006	New Brunswick Innova 44R, orbit 2.5 cm (1 in), 25-400 rpm, refrigerated	20 °C below ambient to 80 °C	14 x 1 L Erlenmeyer flasks
M1282-0016	New Brunswick Innova 44R, orbit 5.1 cm (2 in), 25-300 rpm, refrigerated	20 °C below ambient to 80 °C	14 x 1 L Erlenmeyer flasks

EPENDORF New Brunswick Innova® 42/42R - Stackable incubator shaker

97

Article-No.	Product	Temperature range	Capacity (universal platform)
M1335-0006	New Brunswick Innova 42, orbit 1.9 cm (0.75 in), 25-400 rpm	10 °C above ambient to 80 °C	8 x 1 L Erlenmeyer flasks
M1282-0012	New Brunswick Innova 42R, orbit 1.9 cm (0.75 in), 25-400 rpm	20 °C below ambient to 80 °C	8 x 1 L Erlenmeyer flasks

EPENDORF New Brunswick Innova® 40/40R - Benchtop orbital shaker

98

Article-No.	Product	Temperature range	Capacity (universal platform)
M1299-0082	New Brunswick Innova 40, orbit 1.9 cm (0.75 in), 25-500 rpm	10 °C above ambient to 80 °C	8 x 1 L Erlenmeyer flasks
M1299-0086	New Brunswick Innova 40R, orbit 1.9 cm (0.75 in), 25-500 rpm, refrigerated	15 °C below ambient to 80 °C (min. 4 °C)	8 x 1 L Erlenmeyer flasks
M1299-0092	New Brunswick Innova 40, orbit 2.5 cm (1 in), 25-500 rpm	10 °C above ambient to 80 °C	8 x 1 L Erlenmeyer flasks
M1299-0096	New Brunswick Innova 40R, orbit 2.5 cm (1 in), 25-500 rpm, refrigerated	15 °C below ambient to 80 °C (min. 4 °C)	8 x 1 L Erlenmeyer flasks

EPENDORF CryoCube® F740 Series - ULT Freezer

99

Article-No.	Product	Temperature range	Total box capacity 53 mm (2 in)
F740320011	CryoCube F740hi, 3 compartments, handle left side, touch interface, air cooling	-50 °C to -86 °C	576
F740320111	CryoCube F740hiw, 3 compartments, handle left side, touch interface, water cooling	-50 °C to -86 °C	576
F740340011	CryoCube F740h, 3 compartments, handle left side, air cooling	-50 °C to -86 °C	576

Options:

- also available with 5 compartments
- also available with handle on the right-hand side (not for water cooling)

EPENDORF CryoCube® F570 Series - ULT Freezer

100

Article-No.	Product	Temperature range	Total box capacity 53 mm (2 in)
F571340031	CryoCube F570h, 5 compartments, handle left side, air cooling, efficient insulation	-50 °C to -86 °C	400
F571300031	CryoCube F570n, 5 compartments, handle left side, air cooling	-50 °C to -86 °C	400
F571340131	CryoCube F570hw, 5 compartments, handle left side, water cooling	-50 °C to -86 °C	400

EPENDORF CryoCube® F440 Series - ULT Freezer

101

Article-No.	Product	Temperature range	Total box capacity 53 mm (2 in)
F440340031	CryoCube F440h, 5 compartments, handle left side, air cooling, efficient insulation	-50 °C to -86 °C	320
F440300031	CryoCube F440n, 5 compartments, handle left side, air cooling	-50 °C to -86 °C	320

EPPENDORF CryoCube® F101h - ULT Freeze

102



Article-No.	Product	Temperature range	Total box capacity 53 mm (2 in)
F101340061	CryoCube F101h, 2 compartments, handle right side, air cooling	-50 °C to -86 °C	66

EPPENDORF ULT Chest Freezers

103



Article-No.	Product	Temperature range	Total box capacity 53 mm (2 in)
F660320001	CryoCube FC660h, open from the top, air cooling	-50 °C to -86 °C	520

EPPENDORF Mastercycler® X40 - PCR Thermocycler

104



Article-No.	Product	Sample capacity	Heating rate	Cooling rate
6381 000 018	Mastercycler X40, aluminium block, touchscreen	96-well plate or 0.1/0.2 mL tubes	3.3 °C/s	1.5 °C/s

EPPENDORF Mastercycler® X50 - PCR-Thermocycler

105



Article-No.	Product	Sample capacity	Heating rate	Cooling rate
6311 000 010	Mastercycler X50s, silver block, touchscreen	96-well or 0.1/0.2 mL tubes	max. 10 °C/s	max. 5 °C/s
6313 000 018	Mastercycler X50a, aluminium block, touchscreen	96-well or 0.1/0.2 mL tubes	max. 5 °C/s	max. 2.3 °C/s
6316 000 019	Mastercycler X50h, aluminium block, high pressure lid, touchscreen	384-well	max. 5 °C/s	max. 2.3 °C/s
6301 000 012	Mastercycler X50i, silver block, eco unit	96-well or 0.1/0.2 mL tubes	max. 10 °C/s	max. 5 °C/s
6303 000 010	Mastercycler X50l, aluminium block, eco unit	96-well or 0.1/0.2 mL tubes	max. 5 °C/s	max. 2.3 °C/s
6306 000 010	Mastercycler X50t, aluminium block, high pressure lid	384-well	max. 5 °C/s	max. 2.3 °C/s

EPPENDORF Mastercycler® nexus X2 - PCR Thermal Cycler

106



Article-No.	Product	Sample capacity	Heating rate	Cooling rate
6336 000 015	Mastercycler nexus GX2, aluminium block, with display, gradient range	64/32x0.2 mL PCR tubes or up to 24/10x0.5 mL PCR tubes	max. 3 °C/s	max. 2 °C/s
6337 000 019	Mastercycler nexus X2, aluminium block, with display		max. 3 °C/s	max. 2 °C/s
6338 000 012	Mastercycler nexus GX2e, aluminium block, gradient range		max. 3 °C/s	max. 2 °C/s
6339 000 016	Mastercycler nexus X2e, aluminium block		max. 3 °C/s	max. 2 °C/s

EPPENDORF ThermoMixer® F

107



Article-No.	Product	Thermoblock for	Temperature range	Heating rate
5384 000 012	ThermoMixer F1.5	24 reaction vessels 1.5 mL	4 °C above RT, max: 100 °C	max. 11 °C/min
5385 000 016	ThermoMixer FP	Microplates and Deepwell Plates	4 °C above RT, max: 100 °C	max. 18 °C/min
5386 000 010	ThermoMixer F0.5	24 reaction vessels 0.5 mL	4 °C above RT, max: 100 °C	max. 15 °C/min
5386 000 013	ThermoMixer F2.0	24 reaction vessels 2.0 mL	4 °C above RT, max: 100 °C	max. 13 °C/min

EPPENDORF ThermoMixer® C

108



Article-No.	Product	Temperature range	Heating rate	Cooling rate
5382 000 015	ThermoMixer C, basic device without thermoblock	15 °C below RT, max: 100 °C*	Max. 7 °C/min (when using SmartBlock plates)*	Max. 2.5 °C/min between 100 °C and RT

* depending on SmartBlock used

SmartBlocks:

A wide range of Eppendorf SmartBlocks is available, both for plates and reaction vessels. We will be happy to help you with your selection.

EPPENDORF ThermoStat C

109



Article-No.	Product	Temperature range	Heating rate	Cooling rate
5383 000 019	ThermoStat C, basic device without thermoblock	Min: 30 °C below RT, max: 110 °C*	Max. 9 °C/min (when using the SmartBlock PCR 384)*	Max. 5.0 °C/min between 110 °C and RT*

* depending on SmartBlock used

SmartBlocks:

A wide range of Eppendorf SmartBlocks is available, both for plates and reaction vessels. We will be happy to help you with your selection.

EPPENDORF MiniSpin®/ MiniSpin® plus - Mini Centrifuge

110



Article-No.	Product	Rotor included	Max. RCF	Max. capacity
5452 000 010	Centrifuge MiniSpin, keypad, non-refrigerated	F-45-12-11	12,100 × g	12 × 1.5/2.0 mL
5453 000 015	Centrifuge MiniSpin plus, keypad, non-refrigerated	F-45-12-11	14,100 × g	12 × 1.5/2.0 mL

EPPENDORF Centrifuge 5425/5425 R - 24-place lab standard

111



Article-No.	Product	Rotor included	Max. RCF	Max. capacity
5406 000 518	Centrifuge 5425 R, rotary knobs, refrigerated	FA-24x2 with QuickLock®	21,300 × g	24 × 1.5/2.0 mL
5405 000 174	Centrifuge 5425, rotary knobs, non-refrigerated	FA-18x2 with QuickLock®	21,300 × g	18 × 1.5/2.0 mL
5405 000 516	Centrifuge 5425, rotary knobs, non-refrigerated	FA-24x2 incl. QuickLock® Pro lid	21,300 × g	24 × 1.5/2.0 mL

Options:

- Models with keypad are also available
- Basic versions without rotor are also offered
- A wide range of Eppendorf Rotors is available. We will be happy to help you with your selection.

EPPENDORF Centrifuge 5430/ 5430 R - Fast, versatile, compact

112



Article-No.	Product	Rotor included	Max. RCF	Max. capacity
5427 000 415	Centrifuge 5430, rotary knobs, non-refrigerated	FA-45-30-11	30.130 × g	"48 × 1.5/2.0 mL, 6 × 50 mL, 2 × MTP"
5427 000 178	Centrifuge 5430, rotary knobs, non-refrigerated	A-2-MTP	2204 × g	MTP, PCR and Deepwell Plates (max. 0.5 mL)
5428 000 410	Centrifuge 5430 R, rotary knobs, refrigerated	FA-45-30-11	30.130 × g	48 × 1.5/2.0 mL, 6 × 50 mL, 2 × MTP

Options:

- Models with keypad are also available
- Basic versions without rotor are also offered
- A wide range of Eppendorf Rotors is available. We will be happy to help you with your selection.

EPPENDORF 5804/ 5810 - Medium to high throughput

113



Article-No.	Product	Rotor included	Max. RCF	Max. capacity
5805 000 320	Centrifuge 5804, keypad, non-refrigerated	A-4-44 incl. adapters	20,913 × g	16 × 15 mL/4 × 50 mL
5810 000 620	Centrifuge 5810, keypad, non-refrigerated	S-4-104 incl. adapters	20,913 × g	92 × 13 mm/80 × 16 mm round bottom tubes

Options:

- Models with keypad are also available
- Basic versions without rotor are also offered
- A wide range of Eppendorf Rotors is available. We will be happy to help you with your selection.

FALCON Pipet controller

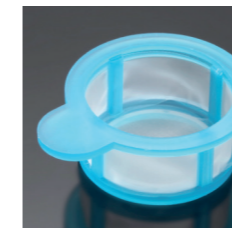
114



Article-No.	Product	Unit
357469	Falcon® Pipet Controller, 0.5-100 mL volume range	1/EA

FALCON Cell strainer, individually packaged

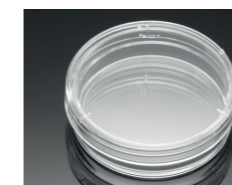
115



Article-No.	Product	Unit
352340	40 µm Cell Strainer, White, Sterile	50/CS
352350	70 µm Cell Strainer, White, Sterile	50/CS
352360	100 µm Cell Strainer, Yellow, Sterile	50/CS

FALCON Cell Culture Dishes

116



Article-No.	Product	Unit
353001	35 mm TC-treated Easy-Grip Style Cell Culture Dish	500/CS
353002	60 mm TC-treated Cell Culture Dish	500/CS
353004	60 mm TC-treated Easy-Grip Style Cell Culture Dish	500/CS
353003	100 mm TC-treated Cell Culture Dish	200/CS
353025	150 mm TC-treated Cell Culture Dish with 20 mm Grid	100/CS
353037	60 mm TC-Treated Center Well Organ Culture Dish	500/CS

FALCON Bacteriological Petri Dishes

117



Article-No.	Product	Unit
351006	35 mm TC-treated Easy-Grip Style Cell Culture Dish	500/BOX
351007	Bacteriological Petri Dish, 60x15 mm Not TC-treated	500/BOX
351008	Bacteriological Petri Dish, 35 mm Not TC-treated Easy-Grip Style	500/BOX
351029	Bacteriological Petri Dish, 100x15 mm Not TC-treated	500/BOX

FALCON Cell Culture Flask

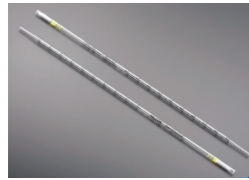
118



Article-No.	Product	Unit
353014	25 cm² Cell Culture Flask, Canted Neck, Blue Plug Seal Cap	200/CS
353107	12.5 cm² Cell Culture Flask, Canted Neck, Blue Vented Cap	100/CS
353108	25 cm² Cell Culture Flask, Canted Neck, Vented Cap	100/CS
353110	75 cm² Cell Culture Flask, Straight Neck, Vented Cap	100/CS
353112	175 cm² Cell Culture Flask, Straight Neck, Vented Cap	40/CS
353136	75 cm² Cell Culture Flask, Canted Neck, Vented Cap	60/CS
353138	225 cm² Cell Culture Flask, Canted Neck, Vented Cap	30/CS
355001	150 cm² Cell Culture Flask, Canted Neck, Vented Cap	40/CS

FALCON Serological Pipet, Individually Packed

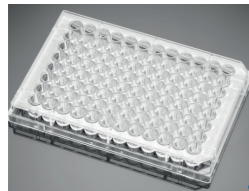
119



Article-No.	Product	Unit
356521	1 mL Serological Pipet, PS, Individually All-Plastic wrap	1,000/CS
357521	1 mL Serological Pipet, PS, Individually Paper-Plastic wrap	1,000/CS
357507	2 mL Serological Pipet, PS, Individually Paper-Plastic wrap	1,000/CS
356543	5 mL Serological Pipet, PS, Individually All-Plastic wrap	200/CS
357543	5 mL Serological Pipet, PS, Individually Paper-Plastic wrap	200/CS
356551	10 mL Serological Pipet, PS, Individually All-Plastic wrap	200/CS
357551	10 mL Serological Pipet, PS, Individually Paper-Plastic wrap	200/CS
357525	25 mL Serological Pipet, PS, Individually Paper-Plastic wrap	200/CS
357550	50 mL Serological Pipet, PS, Individually Paper-Plastic wrap	100/CS
357600	100 mL Serological Pipet, PS, Individually All-Plastic wrap	50/CS

FALCON Multiwell Cell Culture Plate

120



Article-No.	Product	Unit
353046	6-well Multiwell Cell Culture Plate, Clear, TC-treated	50/CS
353043	12-well Multiwell Cell Culture Plate, Clear, TC-treated	50/CS
353047	24-well Multiwell Cell Culture Plate, Clear, TC-treated	50/CS
353078	48-well Multiwell Cell Culture Plate, Clear, TC-treated	50/CS
353504	24-well Cell Culture Insert Companion plate, TC-treated	50/CS
351172	96-well Microplate, Flat Bottom, Not Treated	50/CS
351177	96-well Microplate, Round Bottom, Not Treated	50/CS
353072	96-well Microplate, Flat Bottom, TC-treated	50/CS
353077	96-well Microplate, Round Bottom, TC-treated	50/CS

FALCON Round-Bottom Tubes

121



Article-No.	Product	Unit
352001	14 mL Round Bottom Polystyrene Tube, Snap Cap, Sterile	500/CS
352003	5 mL Round Bottom Polystyrene Tube, Snap Cap, Sterile	500/CS
352008	5 mL Round Bottom Polystyrene Tube, without Cap, Nonsterile	1000/CS
352037	16 mL Round Bottom Polystyrene Tube, Screw Cap, Sterile	500/CS
352052	5 mL Round Bottom Polystyrene Test Tube, without Cap, Sterile	1000/CS
352054	5 mL Round Bottom Polystyrene Tube, Snap Cap, Sterile	1000/CS
352057	14 mL Round Bottom Polystyrene Tube, Snap Cap, Sterile	500/CS
352058	5 mL Round Bottom Polystyrene Tube, Snap Cap, Sterile	500/CS
352059	14 mL Round Bottom High-Clarity Polystyrene Tube, Snap Cap, Sterile	500/CS
352063	5 mL Round Bottom High-Clarity Polystyrene Tube, Snap Cap, Sterile	500/CS
352235	5 mL Round Bottom Polystyrene Tube, Cell Strainer Snap Cap	500/CS

FALCON Conical Centrifuge Tubes

122



Article-No.	Product	Unit
352096	15 mL Conical Centrifuge Tube, PP	500/CS
352097	15 mL Conical Centrifuge Tube, PP, in rack	500/CS
352095	15 mL Conical Centrifuge Tube, PS	500/CS
352099	15 mL Conical Centrifuge Tube, PS, in rack	500/CS
352070	50 mL Conical Centrifuge Tube, PP	500/CS
352098	50 mL Conical Centrifuge Tube, in rack	500/CS
352076	175 mL Conical Centrifuge Tube, PP	48/CS
352075	225 mL Conical Centrifuge Tube, PP	48/CS

GENEVAC miVac Centrifugal Evaporator

123



Article-No.	Product	Rotor	Pump	Including
100402971	DNA Integrated System	48x1.5/2 ml Eppendorf micro-centrifuge tubes	Low vacuum pump	catch pot
100409188	Duo Basic Package	without rotor*	Duo pump	Connection Kit
100409192	Duo Plus Package	without rotor*	Duo pump	MV SpeedTrap, Connection Kit
100409196	Duo Elite Package	without rotor*	Quattro Pump	MV SpeedTrap, Pressure Controller, Connection Kit
100409200	Quattro High Package	without rotor*	Quattro Pump	MV SpeedTrap, Connection Kit
100409205	Quattro Super Package	without rotor*	Super Vacuum Pump	MV SpeedTrap, Pressure Controller, Connection Kit
100409209	"Quattro Freeze Drying Package"	without rotor*	Super Vacuum Pump	MV SpeedTrap, Pressure Controller, MV Freeze Drying accessory kit (with out flasks), Connection Kit

- *Multiple rotors for miVac Duo and Quattro for a variety of sample formats including tubes, vials, centrifuge tubes, microplates, and more are available
- Quattro - double the capacity of the Duo concentrator for high-throughput evaporation

GENEVAC EZ-2 4.0 Series Centrifugal Evaporators

124



Article-No.	Product	Temperatures	Pump	Features
100023731	EZ-2 4.0 Standard, 230 V	for solvents with boiling points up to 120 °C, ideal for evaporating volatiles	Internal diaphragm vacuum pump	HCL compatible, inert gas purge option included *
100023715	EZ-2 4.0 Plus, 230 V	for solvents with boiling points up to 165 °C, ideal for evaporating HPLC fractions and nitric acid	Internal diaphragm vacuum pump	HCL compatible, inert gas purge option included *
100023747	EZ-2 4.0 Elite, 230 V	for solvents with boiling points up to 220 °C, for evaporating high boiling point solvents and lyophilizing aqueous based samples	External nXDS6i dry scroll pump	HCL compatible, inert gas purge option included *

- * All models also available without HCL compatibility and/or without inert gas purge option.
- All models include a two position rotor

GENEVAC EZ-2 4.0 Bionic Centrifugal Evaporator

125

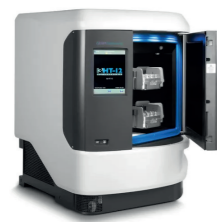


Article-No.	Product	Pump	Features
100428743	EZ-2 Bionic Core Package, 230V	External nXDS6i Dry Scroll Pump	HCL compatible, inert gas purge option included

- The NEW EZ-2 4.0 Bionic come with all the standard features of the EZ-2 Elite, but improved and optimized for automated operation: automated lid optimized for robotic operation, indexed rotors, command set and automation-friendly sample holders.

GENEVAC HT Series 3i Vacuum Evaporator

126



Article-No.	Product	Pump	Features
100449086	HT3i6-23050-NNA-X Evaporator, with 6 position rotor	External nXDS6i dry scroll pump	VC7000 condenser, DriPure, SampleGuard, all connections, waste container and packaging (swings not included)
100449080	HT3i12-3050-NNA-X Evaporator, with 12 position rotor	External nXDS6i dry scroll pump	VC7000 condenser, DriPure, SampleGuard, all connections, waste container and packaging (swings not included)

- The ideal solution for parallel evaporation bottlenecks, the innovative high-performance Genevac HT Series 3i vacuum evaporators are suitable for high sample capacities.

GENEVAC Rocket Synergy 2 Benchtop Evaporator

127



Article-No.	Product	Pump	Features
RKS2-2350-SNW	Rocket Synergy 2 high speed evaporator	integral 4-head solvent resistant vacuum pump	6 place flask rotor, strobe, and water valve. Includes flask rack, 6 blanking plugs, 5L waste container and packaging
RKS2-23050-SPW	Rocket Synergy 2 high speed evaporator, with inert purge	integral 4-head solvent resistant vacuum pump	6 place flask rotor, strobe, water valve. Includes flask rack, 6 flasks, 5L waste container and packaging

- Dry or concentrate up to six flasks each containing a maximum of 450 mL of solvent, or 18 ASE® vials
- Interchangeable rotors to give flexibility with sample format

GILSON PIPETMAN® G Type single-channel

128



Article-No.	Product	Volume	Unit
F144054M	Pipetman G P2, metal ejector	0.2-2 µL	1/EA
F144055M	Pipetman G P10, metal ejector	1-10 µL	1/EA
F144056M	Pipetman G P20, metal ejector	2-20 µL	1/EA
F144057M	Pipetman G P100, metal ejector	10-100 µL	1/EA
F144058M	Pipetman G P200, metal ejector	20-200 µL	1/EA
F144059M	Pipetman G P1000, metal ejector	100-1000 µL	1/EA
F144066	Pipetman G P5000	500-5000 µL	1/EA
F144067	Pipetman G P10 mL	1-10 mL	1/EA

Kit

F167900	Pipetman G Starter Kit, P20, P200, P1000	1/SET
F167800	Pipetman G Micro-Volume Kit, P2, P10, P100	1/SET
F167920	Pipetman G Large-Volume Kit, P5000, P10 mL	1/SET
F167360	Pipetman G 4-pipette kit, P2, P20, P200G, P1000	1/SET

GILSON PIPETMAN® G Type multi-channel

129



Article-No.	Product	Volume	Unit
F144068	Pipetman G, Multi P8x10	1-10 µL	1/EA
F144070	Pipetman G, Multi P8x20	2-20 µL	1/EA
F144072	Pipetman G, Multi P8x200	20-200 µL	1/EA
F144074	Pipetman G, Multi P8x300	30-300 µL	1/EA
F144069	Pipetman G, Multi P12x10	1-10 µL	1/EA
F144071	Pipetman G, Multi P12x20	2-20 µL	1/EA
F144073	Pipetman G, Multi P12x200	20-200 µL	1/EA
F144075	Pipetman G, Multi P12x300	30-300 µL	1/EA

GILSON PIPETMAN® L Type single-channel

130



Article-No.	Product	Volume	Unit
FA10001P	Pipetman L, P2L, plastic ejector	0.2-2 µL	1/EA
FA10002P	Pipetman L, P10L, plastic ejector	1-10 µL	1/EA
FA10003P	Pipetman L, P20L, plastic ejector	2-20 µL	1/EA
FA10004P	Pipetman L, P100L, plastic ejector	10-100 µL	1/EA
FA10005P	Pipetman L, P200L, plastic ejector	20-200 µL	1/EA
FA10006P	Pipetman L, P1000L, plastic ejector	100-1000 µL	1/EA
FA10007	Pipetman L, P5000L	500-5000 µL	1/EA
FA10008	Pipetman L, P10 mL L	1-10 mL	1/EA
FA10001M	Pipetman L, P2L, metal ejector	0.2-2 µL	1/EA
FA10002M	Pipetman L, P10L, metal ejector	1-10 µL	1/EA
FA10003M	Pipetman L, P20L, metal ejector	2-20 µL	1/EA
FA10004M	Pipetman L, P100L, metal ejector	10-100 µL	1/EA
FA10005M	Pipetman L, P200L, metal ejector	20-200 µL	1/EA
FA10006M	Pipetman L, P1000L, metal ejector	100-1000 µL	1/EA

Kit

F167550	Pipetman L Micro Volume Kit: P2L, P10L, P100L	1/SET
F167350	Pipetman L Starter Kit: P20L, P200L, P1000L	1/SET
F167370	Pipetman L Starter Kit 4 : P2L, P20L, P200L, P1000L	1/SET

GILSON PIPETMAN® L Type multi-channel

131



Article-No.	Product	Volume	Unit
FA10013	Pipetman L, Multi P8x10L	0.5-10 µL	1/EA
FA10009	Pipetman L, Multi P8x20L	2-20 µL	1/EA
FA10011	Pipetman L, Multi P8x200L	20-200 µL	1/EA
FA10015	Pipetman L, Multi P8x300L	20-300 µL	1/EA
FA10039	Pipetman L, Multi P8x1200L	100-1200 µL	1/EA
FA10014	Pipetman L, Multi P12x10L	0.5-10 µL	1/EA
FA10010	Pipetman L, Multi P12x20L	2-20 µL	1/EA
FA10012	Pipetman L, Multi P12x200L	20-200 µL	1/EA
FA10016	Pipetman L, Multi P12x300L	20-300 µL	1/EA
FA10040	Pipetman L, Multi P12x1200L	100-1200 µL	1/EA

GILSON PIPETMAN® M Connected single-channel

132



Article-No.	Product	Volume	Unit
F81040	Pipetman M Connected P10M	0.5-10 µL	1/EA
F81041	Pipetman M Connected P20M	2-20 µL	1/EA
F81042	Pipetman M Connected P100M	5-100 µL	1/EA
F81043	Pipetman M Connected P200M	20-200 µL	1/EA
F81044	Pipetman M Connected P300M	20-300 µL	1/EA
F81045	Pipetman M Connected P1200M	100-1200 µL	1/EA
F81046	Pipetman M Connected P5000M	500-5000 µL	1/EA
F81047	Pipetman M Connected P10mLM	1-10 mL	1/EA

GILSON PIPETMAN® M Connected multi-channel

133



Article-No.	Product	Volume	Unit
F81048	Pipetman M Connected P8X10M	0.5-10 µL	1/EA
F81050	Pipetman M Connected P8X20M	1-20 µL	1/EA
F81052	Pipetman M Connected P8X100M	10-100 µL	1/EA
F81054	Pipetman M Connected P8X200M	20-200 µL	1/EA
F81056	Pipetman M Connected P8X300M	10-300 µL	1/EA
F81058	Pipetman M Connected P8X1200M	50-1200 µL	1/EA
F81049	Pipetman M Connected P12X10M	0.5-10 µL	1/EA
F81051	Pipetman M Connected P12X20M	1-20 µL	1/EA
F81053	Pipetman M Connected P12X100M	10-100 µL	1/EA
F81055	Pipetman M Connected P12X200M	20-200 µL	1/EA
F81057	Pipetman M Connected P12X300M	10-300 µL	1/EA
F81059	Pipetman M Connected P12X1200M	50-1200 µL	1/EA

GILSON Microman E

134



Article-No.	Product	Volume	Unit
FD10001	Microman M10E	1-10 µL	1/EA
FD10002	Microman M25E	3-25 µL	1/EA
FD10003	Microman M50E	20-50 µL	1/EA
FD10004	Microman M100E	10-100 µL	1/EA
FD10005	Microman M250E	50-250 µL	1/EA
FD10006	Microman M1000E	100-1000 µL	1/EA

GILSON Macroman

135



Article-No.	Product	Volume	Unit
F110120	Macroman	0.1-100 mL	1/EA

GILSON Carrousel pipette stand

136



Article-No.	Product	Unit
F161401	Carrousel, Pipette Stand, 7 hole	1/EA
F161406	Pipette single holder	1/EA
F161405	Trip Portable Stand for 3 Pipettes	1/EA

GILSON PIPETMAN® DIAMOND Tips ECOPACK, bulk

137



Article-No.	Product	Unit
	Diamond Tips, Ecopack D10 (0.1-10 µL)	1,000/PK. 10,000/CS
F161450	Diamond Tips, Ecopack DL10 (0.1-20 µL)	1,000/PK. 10,000/CS
F161930	Diamond Tips, Ecopack D200 (2-200 µL)	1,000/PK. 10,000/CS
F161730	Diamond Tips, Ecopack D300 (20-300 µL)	1,000/PK. 10,000/CS
F161670	Diamond Tips, Ecopack D1000 (100-1000 µL)	1,000/PK. 10,000/CS
F161110	Diamond Tips, Ecopack D1200 (100-1200 µL)	1,000/PK. 10,000/CS

GILSON PIPETMAN® DIAMOND Tips EASYPACK, bulk

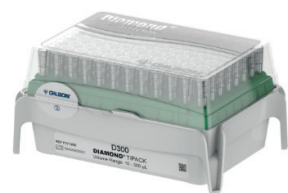
138



Article-No.	Product	Unit
F161631	Diamond Tips, EasyPack D10 (0.1 -10 µL)	1,000/CS
F161451	Diamond Tips, EasyPack DL10 (0.1 -20 µL)	1,000/CS
F161931	Diamond Tips, EasyPack D200 (2-200 µL)	1,000/CS
F161731	Diamond Tips, EasyPack D300 (20-300 µL)	1,000/CS
F161671	Diamond Tips, EasyPack D1000 (100-1000 µL)	1,000/CS
F161111	Diamond Tips, EasyPack D1200 (100-1200 µL)	1,000/CS
F161571	Diamond Tips, EasyPack D5000 (0.5-5 ml)	1,002/CS
F161210	Diamond Tips, EasyPack D10ml (1-10 ml)	200/CS

GILSON PIPETMAN® DIAMOND Tips TIPACK

139



Article-No.	Product	Unit
F171100	Diamond Tips, Tipack D10 (0.1-10 µL)	960/PK
F171200	Diamond Tips, Tipack DL10 (0.1-20 µL)	960/PK
F171300	Diamond Tips, Tipack D200 (2-200 µL)	960/PK
F171400	Diamond Tips, Tipack D300 (20-300 µL)	960/PK
F171500	Diamond Tips, Tipack D1000 (100-1000 µL)	960/PK
F171600	Diamond Tips, Tipack D1200 (100-1200 µL)	960/PK
F161370	Diamond Tips, Tipack D5000 (0.5-5 mL)	600/PK
F161230	Diamond Tips, Tipack D10 mL (1-10 mL)	240/PK
F171101	Diamond Tips, Tipack D10ST (0.1-10 µL)	960/PK
F171201	Diamond Tips, Tipack DL10ST (0.1-20 µL)	960/PK
F171301	Diamond Tips, Tipack D200ST (2-200 µL)	960/PK
F171401	Diamond Tips, Tipack D300ST (20-300 µL)	960/PK
F171501	Diamond Tips, Tipack D1000ST (100-1000 µL)	960/PK
F171601	Diamond Tips, Tipack D1200ST (100-1200 µL)	960/PK

GILSON PIPETMAN® DIAMOND Tips TOWERPACK

140



Article-No.	Product	Unit
F167101	Diamond Tips, TOWERPACK D10 (0.1 - 10 µL)	960/PK
F167102	Diamond Tips, TOWERPACK DL10 (0.1-20 µL)	960/PK
F167103	Diamond Tips, TOWERPACK D200 (2-200 µL)	960/PK
F167105	Diamond Tips, TOWERPACK D300 (20-300 µL)	960/PK
F167104	Diamond Tips, TOWERPACK D1000 (200-1000 µL)	960/PK
F167201	Diamond Tips, TOWERPACK D1 OST (0.1-10 µL)	960/PK
F167202	Diamond Tips, TOWERPACK DL10ST (0.1-20 µL)	960/PK
F167203	Diamond Tips, TOWERPACK D200ST (2-200 µL)	960/PK
F167205	Diamond Tips, TOWERPACK D300ST (20-300 µL)	960/PK
F167204	Diamond Tips, TOWERPACK D1000ST (100-1000 µL)	672/PK
F167100	Universal Reload Box	1/EA

GILSON PIPETMAN® DIAMOND Sterilized Filter Tips TIPACK

141



Article-No.	Product	Unit
F171103	Diamond Tips, Sterilized Filter Tipack DF10ST (0.1-10 µL)	960/PK
F171203	Diamond Tips, Sterilized Filter Tipack DF10LST (0.1-10 µL)	960/PK
F171303	Diamond Tips, Sterilized Filter Tipack DF30ST (2-30 µL)	960/PK
F171403	Diamond Tips, Sterilized Filter Tipack DF100ST (10-100 µL)	960/PK
F171503	Diamond Tips, Sterilized Filter Tipack DF200ST (10-200 µL)	960/PK
F171603	Diamond Tips, Sterilized Filter Tipack DF300ST (20-300 µL)	960/PK
F171703	Diamond Tips, Sterilized Filter Tipack DF1000ST (100-1000 µL)	960/PK
F171803	Diamond Tips, Sterilized Filter Tipack DF1200ST (100-1200 µL)	960/PK

GILSON PIPETMAN® DIAMOND Tips Blister Refill

142



Article-No.	Product	Unit
F172201	Pipetman Diamond Tips, Blister Refill DL10ST (0.1-20 µL)	960/PK
F172301	Pipetman Diamond Tips, Blister Refill D200ST (2-200 µL)	960/PK
F172801	Pipetman Diamond Tips, Blister Refill D1200ST (50-1200 µL)	960/PK

GILSON PIPETMAN® DIAMOND Tips Reload Pack

143



Article-No.	Product	Unit
F167012	Diamond Tips, Reload Pack DL10 (0.1-20 µL)	960/PK
F167013	Diamond Tips, Reload Pack D200 (2-200 µL)	960/PK
F167014	Diamond Tips, Reload Pack D1000 (100-1000 µL)	576/PK

GILSON Capillary Pistons

144



Article-No.	Product	Unit
F148412	Capillary Pistons, CP10 2x96 TIPACK	192/BOX
F148312	Capillary Pistons, CP10 10x96 TIPACK	960/BOX
F148112	Capillary Pistons, CP25 Bulk	200/BOX
F148012	Capillary Pistons, CP25 Box of 960	960/BOX
F148113	Capillary Piston, CP50, Bulk	200/BOX
F148013	Capillary Pistons, CP50 Box of 960	960/BOX
F148414	Capillary Pistons, CP100 2x96 TIPACK	192/BOX
F148314	Capillary Pistons, CP100 10x96 TIPACK	960/BOX
F148014	Capillary Pistons, CP250 Box of 960	960/BOX
F148114	Capillary Piston, CP250, Bulk	200/BOX
F148560	Capillary Pistons, CP1000 2x91 TIPACK	182/BOX
F148413	Capillary Pistons, CP1 OST 2x96 TIPACK	192/BOX
F148313	Capillary Pistons, CP1 OST, Sterile, 10x96 TIPACK	960/BOX
F148712	Capillary Pistons, CP25ST, Sterile, 6x96 TIPACK	576/BOX
F148713	Capillary Pistons, CP50ST, Sterile, 6x96 TIPACK	576/BOX
F148415	Capillary Pistons, CP100ST, Sterile, 2x96 TIPACK	192/BOX
F148315	Capillary Pistons, CP100ST, Sterile, 10x96 TIPACK	960/BOX
F148714	Capillary Pistons, CP250ST, Sterile, 6x96 TIPACK	576/BOX
F148180	Capillary Pistons, CP1000ST, Sterile, 2x91 TIPACK	192/BOX

GILSON PIPETMAN® DIAMOND Tips STERILPACK

145



Article-No.	Product	Unit
F161330	Diamond Tips, Steril pack D200ST (2-200 µL)	400/PK
F161340	Diamond Tips, Steril pack D1000ST (100-1000 µL)	400/PK

GILSON Empty Rack/Box

146



Article-No.	Product	Unit
F171102	Empty Rack D10	2/PK
F171202	Empty Rack DL10	2/PK
F171302	Empty Rack D200	2/PK
F171402	Empty Rack D300	2/PK
F171502	Empty Rack D1000	2/PK
F161360	Empty Rack D5000	1/EA
F161220	Empty Rack D10mL	1/EA
F171204	Empty Box DL10-D200	2/PK
F171504	Empty Box D1000	2/PK

HANNA INSTRUMENTS wireless pH-Tester®

147



Article-No.	Product	Features
HI9810422	HALO2 Wireless pH Tester for Field	calibration reminders, electrode status display, and alarms

- Wireless pH tester for field use, precise and easy to use
- All HALO2 series testers can be used as standalone testers or connected via the integrated Bluetooth module to a compatible smart device with the Hanna Lab App
- All measurements are displayed with the corresponding calibration data to ensure compliance with regulatory standards

HANNA INSTRUMENTS portable photometer

148



Article-No.	Product	Features
HI97106	Chemical Oxygen Demand Portable Photometer	advanced optical system with LED, narrow band interference filter

- The meter uses an exclusive positive-locking system to ensure that the vials are placed into the holder in the same position every time.
- With the CAL Check functionality, users are able to validate instrument performance at any time.
- The built-in tutorial mode guides users step-by-step through the measurement process.

HANNA INSTRUMENTS Multiparameter pH Meter

149



Article-No.	Product	Features
HI2020-02	edge® Multiparameter pH Meter	ameasures pH, easily expanded to measure conductivity (EC) and dissolved oxygen (DO)

- The electronic pH meter will automatically recognize each digital electrode, providing sensor type, calibration data, and serial number.
- Plugging an electrode in has never been simpler; no alignments, no broken pins, just connect the 3.5 mm plug and get started.

HANNA INSTRUMENTS Low Range pH/Conductivity/TDS Tester

150



Article-No.	Product	Features
HI98129	Combo®, low range pH, EC, TDS (ppm) and temperature meter	waterproof design, simple operation, replaceable electrode

- Measures pH, EC in the low range (0 to 3999 $\mu\text{S}/\text{cm}$), TDS (0 to 2000 ppm), and temperature.
- All pH, EC, and TDS (ppm) readings are automatically temperature compensated (ATC) to prevent temperature-related variations in your measurements.
- Features an easy to replace pH electrode cartridge with an extendable cloth junction

IMPLEN NanoPhotometer®

151



Article-No.	Product	Functionality	Unit
C40-Touch	C40 Nanophotometer	Cuvette	1/EA
N50-Touch/N60Touch	N50/60 Nanophotometer	Microvolume	1/EA
NP80-Touch	NP80 Nanophotometer	Microvolume and Cuvette	1/EA
N120-Touch	N120 Nanophotometer	Microvolume (12-channel)	1/EA

- German engineering excellence: UV/Vis Spectrophotometer designed and made in Germany
- Maintenance-free performance: Patented Sample Compression and True Path Technology™ ensure no recalibration, ever
- Fast and simple operation: Predefined applications deliver precise results in under 4 seconds
- Seamless connectivity: USB, WiFi, Hotspot, LAN, and REST API for effortless LIMS integration

IMPLEN Optical Density Measurement

152



Article-No.	Product	Unit
OD600-EU	OD600 Optical Density measurement	1/EA

- Effortless OD600 measurements: Ideal for optical density at -600 nm, perfect for cell growth rates and McFarland turbidity integration
- Maximum compatibility: Works seamlessly with DiluCell, cuvettes, and tubes - no adapters required
- Zero maintenance: No recalibration, ever.



Article-No.	Product	Internal dimensions (WxDxH)	External dimensions (WxDxH)	Air volume	Noise level (according to DIN ISO 6081)
703619	Mars 900 Runner	900 x 650 x 720mm	1004 x 797 x 2033mm	"Exhaust air: 260 m ³ /h, Down Flow: 500 m ³ /h, Total: 760 m ³ /h"	<52 dB(A)
703620	Mars 1200 Runner	1200 x 650 x 700mm	1304 x 797 x 1248mm	"Exhaust air: 389 m ³ /h, Down Flow: 650 m ³ /h, Total: 1000 m ³ /h"	<47 dB(A)
703621	Mars 1500 Runner	1500 x 650 x 720mm	1603 x 798 x 1248mm	"Exhaust air: 440 m ³ /h, Down Flow: 810 m ³ /h, Total: 1250 m ³ /h"	"<49 dB(A) <37 dB(A) in Eco-Save-Mode"
703622	Mars 1800 Runner	1800 x 650 x 720mm	1903 x 798 x 1248mm	"Exhaust air: 520 m ³ /h, Down Flow: 957 m ³ /h, Total: 1495 m ³ /h"	"<52 dB(A) <39 dB(A) in Eco-Save-Mode"

“Runner“ configuration includes

- Mars workbench in chosen size, 230 V 50/60Hz
- 2 side windows, each with 3 feed-throughs on the right and left
- Electrical outlets, 2 pairs (one pair right and one pair left in the interior)
- Table top in AISI 304, V-shaped air inlets at the front, full bench width can be used as an armrest
- Adjustable support stand in 3 heights (750-950 mm)
- Prefilter grid with EU-3
- UV light on the front top of the cabinet, control via display
- LED dimmable light (continuously adjustable 0-2000 lux)

Technical highlights

- Safety cabinet with the lowest power consumption in the Eco-Save-Mode on the market
- Laminator technology for even, uniform air flow
- Balanced air flow due to lower speed (0.3m/s +/-10%)
- Precise control of air speed thanks to digital air flow sensor
- 3-way fan system, digitally controlled
- Disc opening 200 mm
- Filter thickness recirculation filter 11 cm
- Exhaust filter: H14 filter quality ≥ 99.995% MPPS, according to EN 1822
- Sloping motorised windscreen, can be opened for cleaning
- Standard worktop segmented into 30 cm wide stainless steel panels
- The Mars cabinets are being manufactured & tested in compliance with EN 12469



Article-No.	Product	Gross volume	Temp. range
994423451	SRPvg 1402 Performance	1.391 L	-2 °C to +16 °C
994473851	SRPvg 6501 Performance	614 L	-2 °C to +16 °C
994483651	SRPvg 8401 Performance	871 L	-2 °C to +16 °C
993884951	SRFfg 3501 Performance with shelves, compliance with ATEX	344 L	+3 °C to +16 °C
993930451	SRFfg 4001 Performance with shelves, compliance with ATEX	394 L	+3 °C to +16 °C
994225551	SRFfg 5501 Performance, compliance with ATEX	558 L	+3 °C to +16 °C
993870251	SRFvg 3501 Performance with shelves	344 L	+3 °C to +16 °C
999408451	LKUv 1610 MediLine	142 L	+3 °C to +16 °C
999408351	LKUexv 1610 MediLine, compliance with ATEX	141 L	+3 °C to +16 °C
999757751	LKexv 1800 MediLine, compliance with ATEX	180 L	+1 °C to +15 °C

LIEBHERR Laboratory freezers



Article-No.	Product	Features	Gross volume	Temp. range
994515051	SRPvg 1402 Performance	fan-assisted cooling	1.391 L	-9 °C to -30 °C
994525551	SRPvg 6501 Performance	fan-assisted cooling	614 L	-9 °C to -30 °C
994533051	SRPvg 8401 Performance	fan-assisted cooling	871 L	-9 °C to -30 °C
994249651	SFFvh 4001 Perfection	fan-assisted cooling	273 L	-9 °C to -30 °C
091649251	SFFfg 5501 Performance with drawers	fan-assisted cooling, compliance with ATEX	499 L	-9 °C to -30 °C
091649051	SFFsg 5501 Performance with drawers	static cooling	499 L	-9 °C to -30 °C
91628651	SFFfg 4001 Performance with drawers	static cooling, compliance with ATEX	316 L	-9 °C to -35 °C
994228451	SFFfg 5501 Performance with shelves	static cooling, compliance with ATEX	499 L	-9 °C to -30 °C
994211351	SFFvh 5501 Perfection	fan-assisted cooling	472 L	-9 °C to -35 °C
999788351	LGUex 1500 MediLine	fan-assisted cooling, compliance with ATEX	139 L	-9 °C to -26 °C

LIEBHERR Laboratory fridge-freezers



Article-No.	Product	Features	Gross volume	Temp. range
994341451	SCFfg 4002 Performance	with SmartFrost, compliance with ATEX	267L / 110L	-9 °C to -30 °C
994299951	SCFvh 4002 Perfection	with NoFrost	272L / 112L	-9 °C to -30 °C

MEMMERT Constant climate chamber

157



Product	Temperature range	External dimension (WxHxD)*	Volume
HPP260eco	without light, with humidity: +5 (at least 20 below ambient temperature) to +70 °C	824x1183x655 mm	256 l

More models:

- In 7 model sizes with volume ranging from 108 - 2140 litres
- Models with enhanced dehumidification and heat compensation performance available

MEMMERT Heating and drying ovens

158



Product	Temperature range	External dimension (WxHxD)*	Volume
UF110	+20 to +300 °C	745x864x584 mm	108 l

More models:

- In 9 model sizes with volume ranging from 32 - 1060 litres
- Also available as programmable variant
- With Natural convection (N) or forced air circulation (F)

MEMMERT Vacuum drying ovens

159



Product	Setting range	External dimension (WxHxD)*	Volume
VO49	+20 to +200 °C, vacuum range: 5 to 1100 mbar	550x687x480 mm	49 l

More models:

- In 3 model sizes with volume ranging from 29 - 101 litres
- Models with inert gas line available

MEMMERT CO₂ incubators

160



Product	Setting range	External dimension (WxHxD)*	Volume
ICO50	Temperature: 5 °C above ambient temperature up to +50 °C, Humidity: 40 to 97 % rh, CO ₂ : 0 to 20 % CO ₂	559x795x521 mm	56 l

More models:

- In 4 model sizes with volume ranging from 56 - 241 litres
- Models with active humidity control available

*plus additional structures

MILLIPORE Amicon® Ultra-4 Centrifugal Filter Unit

161



Article-No.	Product	Unit
UFC800308	Amicon Ultra-4 mL, 3 kDa	8/PK
UFC800324	Amicon Ultra-4 mL, 3 kDa	24/PK
UFC800396	Amicon Ultra-4 mL, 3 kDa	96/PK
UFC801008	Amicon Ultra-4 mL, 10 kDa	8/PK
UFC801024	Amicon Ultra-4 mL, 10 kDa	24/PK
UFC801096	Amicon Ultra-4 mL, 10 kDa	96/PK
UFC803008	Amicon Ultra-4 mL, 30 kDa	8/PK
UFC803024	Amicon Ultra-4 mL, 30 kDa	24/PK
UFC803096	Amicon Ultra-4 mL, 30 kDa	96/PK
UFC805008	Amicon Ultra-4 mL, 50 kDa	8/PK
UFC805024	Amicon Ultra-4 mL, 50 kDa	24/PK
UFC805096	Amicon Ultra-4 mL, 50 kDa	96/PK
UFC810008	Amicon Ultra-4 mL, 100 kDa	8/PK
UFC810024	Amicon Ultra-4 mL, 100 kDa	24/PK
UFC810096	Amicon Ultra-4 mL, 100 kDa	96/PK

MILLIPORE Immobilon®-P PVDF Membrane

162



Article-No.	Product	Unit
IPVH00010	Immobilon-P PVDF, 27 cm x 3.75 m, 0.45 µm pore size	1/ROLL

MILLIPORE TLC Plate

163



Article-No.	Product	Unit
1055530001	TLC Silica gel 60, 25 Aluminium sheets 20x20 cm	25/PK
1055540001	TLC Silica gel 60 F254, 25 Aluminium sheets 20x20 cm	25/PK
1055590001	TLC Silica gel 60 RP-18 F254s, 20 Aluminium sheets 20x20 cm	20/PK
1057150001	TLC Silica gel 60 F254, 25 Glass plates 20x20 cm	25/PK

MILLIPORE Durapore® Membrane Filters

164



Article-No.	Product	Unit
HVLP04700	PVDF, hydrophilic, 0.45 µm 47 mm	100/PK
GVWP04700	PVDF, hydrophilic, 0.22 µm 47 mm	100/PK
HVLP01300	PVDF, hydrophilic, 0.45 µm 13 mm	100/PK
HVLP09050	PVDF, hydrophilic, 0.45 µm 90 mm	50/PK
VVLP04700	PVDF, hydrophilic, 0.1 µm 47 mm	100/PK
SVLP04700	PVDF, hydrophilic, 5 µm 47 mm	100/PK

MILLIPORE Millex Syringe Filter

165



Article-No.	Product	Unit
SLHVX13NK	Millex-HV Filter, 0.45 µm, PVDF, 13 mm, non-sterile	1000/PK
SLGVX13NK	Millex-GV Filter, 0.22 µm, PVDF, 13 mm, non-sterile	1000/PK
SLLGH13NK	Millex-LG Filter, 0.20 µm, Hydrophilic, PTFE, 13 mm, non-sterile	1000/PK
SLHV033NK	Millex-HV Filter, 0.45 µm, PVDF, 33 mm, non-sterile	1000/PK

MICROFLEX Diamond Grip Plus™ Latex gloves (63-754)

166



Product	Product	Unit
63-754-060-XS	Diamond Grip Plus Latex gloves (DGP-INT), X-small	100/PK, 1000/BOX
63-754-070-S	Diamond Grip Plus Latex gloves (DGP-INT), Small	100/PK, 1000/BOX
63-754-080-M	Diamond Grip Plus Latex gloves (DGP-INT), Medium	100/PK, 1000/BOX
63-754-090-L	Diamond Grip Plus Latex gloves (DGP-INT), Large	100/PK, 1000/BOX
63-754-100-XL	Diamond Grip Plus Latex gloves (DGP-INT), X-Large	100/PK, 1000/BOX

MICROFLEX XCEED® Nitrile gloves (93-733)

167



Product	Product	Unit
93-743-060-XS	Supreno Nitrile gloves (SU-INT), X-small	100/PK, 1000/BOX
93-743-070-S	Supreno Nitrile gloves (SU-INT), Small	100/PK, 1000/BOX
93-743-080-M	Supreno Nitrile gloves (SU-INT), Medium	100/PK, 1000/BOX
93-743-090-L	Supreno Nitrile gloves (SU-INT), Large	100/PK, 1000/BOX
93-743-100-XL	Supreno Nitrile gloves (SU-INT), X-Large	100/PK, 1000/BOX

MICROFLEX Supreno® Nitrile gloves (93-743)

168



Product	Product	Unit
93-733-060-XS	XCEED Nitrile gloves(XC-INT), X-small	250/PK, 2500/BOX
93-733-070-S	XCEED Nitrile gloves(XC-INT), Small	250/PK, 2500/BOX
93-733-080-M	XCEED Nitrile gloves(XC-INT), Medium	250/PK, 2500/BOX
93-733-090-L	XCEED Nitrile gloves(XC-INT), Large	250/PK, 2500/BOX
93-733-100-XL	XCEED Nitrile gloves(XC-INT), X-Large	230/PK, 2300/BOX

MIELE Laboratory glasswasher

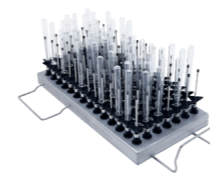
169



Product	Product	Features
12795840	PLW 8604	Laboratory flusher with demineralised water connection
12782250	PLW 8683 [LD DC5 LAN] LW	Laboratory washer with AD water connection, liquid dosing & EcoDry function
12782260	PLW 8683 [LD DC5 LAN] SST	Laboratory washer with AD water connection, liquid dosing & EcoDry function
12798660	PLW 8683 [OIL LD DC5 LAN] SST	Laboratory washer with AD water connection, liquid dosing, EcoDry function & oil seals
12798650	PLW 8683 [OIL PD DC5 LAN] SST	Laboratory washer with AD water connection, powder dosing, EcoDry function & oil seals
12782270	PLW 8683 [PD DC5 LAN] LW	Laboratory washer with AD water connection, powder dosing & EcoDry function
12782280	PLW 8683 [PD DC5 LAN] SST	Laboratory washer with AD water connection, powder dosing & EcoDry function
12799580	PLW 8683 CD [U GD DC5 CM LAN]	Laboratory washer with glass door, with liquid dosing, DryPlus & conductivity monitoring & monitoring package
12799590	PLW 8683 CD [U GD OIL CM LAN]	Laboratory washer with glass door, with liquid dosing, DryPlus, conductivity monitoring & oil seals
12800290	PLW 8693 [FAD DC5 CM MON LAN] SST	Laboratory washer with liquid dosing, DryPlus & conductivity monitoring & monitoring package
12782350	PLW 8693 [FAD DC5 LAN] SST	Laboratory washer with liquid dosing & hot air drying DryPlus
12800300	PLW 8693 [FAD OIL DC5 LAN] SST	Laboratory rinser with liquid dosing, hot air drying DryPlus & oil seals

MIELE Laboratory glasswasher accessories

170



Product	Product	Features
12642640	A 100	Upper basket for the optimum loading of injector modules or inserts
12645590	A 101	Upper basket height adjustable, for the optimum loading of inserts
12645600	A 102	Upper basket height adjustable, for the optimum loading of inserts
12666330	A 150	Lower basket for the optimum loading of injector modules or inserts
12667060	A 200	Mobile unit for the optimum loading of 38 pipettes
11116900	A 303/3	Injector module for optimum loading of laboratory glassware, can be equipped with 8 nozzles
12669230	A 304	Module for the optimum loading of up to 98 vials
12683100	A 306/1	Module for the optimum loading of large-volume laboratory glassware
11056100	A 840	Injector nozzle with plastic supports, nozzle diameter 6 mm, length 130 mm, 1 item

MIELE Detergent

171



Product	Product	Features
10265640	ProCare Lab 10 AP, liquid detergent	alkaline, for optimum reprocessing of laboratory utensils, 10 L
10265620	ProCare Lab 10 AP, liquid detergent	alkaline, for optimum reprocessing of laboratory utensils, 5 L
10266680	ProCare Lab 30 C, neutralising agent	acidic, with citric acid for optimum neutralisation, 10 L
10266670	ProCare Lab 30 C, neutralising agent	acidic, with citric acid for optimum neutralisation, 5 L
9195780	ProCare Universal 61, dishwasher salt	for optimum regeneration of the integrated softener, 6 kg

PHCBI VIP ECO ULT Freezers (-86 °C)

172



Article-No.	Product	Cooling Performance	Volume	Total box capacity (2 inch boxes)
MDF-DU503VH-PE	VIP ECO SMART ULT Freezers (-86 °C)	-86 to -40 °C	528 L	384
MDF-DU703VH-PE	VIP ECO SMART ULT Freezers (-86 °C)	-86 to -40 °C	729 L	576

PHCBI Cryogenic ULT Freezers (-150 °C)

173



Article-No.	Product	Cooling Performance	Volume
MDF-C2156VAN-PE	Cryogenic ULT freezers (-150 °C)	-150 °C	231 L

PHCBI CO₂ Incubators

174



Article-No.	Product	Cooling Performance	Volume
MCO-50AIC-PE	CO2 Incubator, IncuSafe	+5 °C above ambient to 50 °C	50 L
MCO-170AICUVH-PE	CO2 Incubator, IncuSafe, H2O2 decontamination	+5 °C above ambient to 50 °C	165 L
MCO-230AICUVH-PE	CO2 Incubator, IncuSafe, H2O2 decontamination	+5 °C above ambient to 50 °C	230 L
MCO-171AICD-PE	CO2 Incubator, Dry heat sterilization model	+5 °C above ambient to 50 °C	165 L
MCO-50M-PE	Multigas Incubator, IncuSafe, H2O2 decontamination	+5 °C above ambient to 50 °C	50 L
MCO-170MUVH-PE	Multigas Incubator, IncuSafe, H2O2 decontamination	+5 °C above ambient to 50 °C	161 L

POLY KLIMA Growth chamber for plants and in vitro research

175



Product	Number of light shelves	Standard Temperature range	Grow area total
Type S	1 or 2	+7 °C up to +45 °C	0,3m ² - 0,6m ²
Type PK520	3 or 4	+10 °C up to +35 °C	1,0m ² - 1,3m ²
Type MN	1 to 3	-10 °C up to +45 °C	0,5m ² - 1,5m ²
Type M	1 to 5	+7 °C up to +45 °C	0,6m ² - 3,0m ²
Type L	1 to 5	+7 °C up to +45 °C	1,0m ² - 5,0m ²
Type XL	1 to 5	+7 °C up to +45 °C	1,2m ² - 6,0m ²

- Various LED lighting solutions are available: Fullspectrum White LED: True Daylight PLUS, True Daylight PLUS dual and customized solutions with up to 16 light-channels
- High level of standard equipment: Separately switch and dimmable light shelves from 100% to 1%, dehumidification function, 12" touch screen, network connection, interior socket and much more
- Large number of additional options (e.g. ultrasonic or reservoir humidification, change of gas composition (CO₂, O₂, N₂), cell culture and entomology package, etc.)

POLY KLIMA Light shelf solutions

176



Product	Number of light shelves	Width	Depth
Type LB	Various number of light shelves	75cm, 100cm, 130cm, 150cm	30cm, 60cm, 80cm
Type LBA aluminum	Various number of light shelves	75cm, 100cm, 130cm, 150cm	30cm, 60cm, 80cm
Type LBH stainless steel	Various number of light shelves	75cm, 100cm, 130cm, 150cm	30cm, 60cm, 80cm

- Various LED lighting solutions are available: Fullspectrum White LED: True Daylight PLUS, True Daylight PLUS dual and customized solutions with up to 16 light-channels
- Dimming via rotary control on each lightshelf, centrally via optional touch-controller for day/night programming and dimming or integration of existing control systems.
- Full customizable solutions for any room size. The width, depth and height of each shelf can be adapted to the dimensions of the room.

PRECISA Series 390 Semi-Micro Balances

177



Article-No.	Product	Capacity	Readability
390-9104-009	HF 125SM	125 g	0.01 mg
390-9106-009	HF 125SM-FR	61 g - 125 g	0.01 mg / 0.1 mg
390-9107-009	HF 225SM-DR	102 g / 225 g	0.01 mg / 0.1 mg
390-9108-009	HF 225SM-FR	61 g - 225 g	0.01 mg / 0.1 mg
390-9104-003	HA 125SM	125 g	0.01 mg
390-9106-003	HA 125SM-FR	61 g - 125 g	0.01 mg / 0.1 mg
390-9107-003	HA 225SM-DR	102 g / 225 g	0.01 mg / 0.1 mg
390-9108-003	HA 225SM-FR	61 g - 225 g	0.01 mg / 0.1 mg
390-9104-002	HE 125SM	125 g	0.01 mg
390-9106-002	HE 125SM-FR	61 g - 125 g	0.01 mg / 0.1 mg
390-9107-002	HE 225SM-DR	102 g / 225 g	0.01 mg / 0.1 mg
390-9108-002	HE 225SM-FR	61 g - 225 g	0.01 mg / 0.1 mg
390-9104-001	HM 125SM	125 g	0.01 mg
390-9106-001	HM 125SM-FR	61 g - 125 g	0.01 mg / 0.1 mg
390-9107-001	HM 225SM-DR	102 g / 225 g	0.01 mg / 0.1 mg
390-9108-001	HM 225SM-FR	61 g - 225 g	0.01 mg / 0.1 mg

- HF models: Touchless sensor (TLS), ambient observation system (AOS) and electrostatic cancellation system (ECS) included
- HA models: Touchless sensor (TLS) included. Available as option: ambient observation system (AOS) and electrostatic cancellation system (ECS)
- HE models: Available as option: Touchless sensor (TLS), ambient observation system (AOS) and electrostatic cancellation system (ECS)
- HM models: No options available

PRECISA Series 360 Semi-Micro Balances

178



Article-No.	Product	Capacity	Readability
360-9100-002	EP 125SM	125 g	0.01 mg
360-9101-002	EP 225SM-DR	102 g / 225 g	0.01 mg / 0.1 mg
360-9102-001	ES 125SM	125 g	0.01 mg
360-9103-001	ES 225SM-DR	102 g / 225 g	0.01 mg / 0.1 mg

PRECISA Series 321 LS Analytical and Precision Balances

179



Article-No.	Product	Capacity	Readability
321-9249-002	LS 120A	120 g	0.01 mg
321-9250-002	LS 220A	220 g	0.01 mg
321-9251-002	LS 320A	320 g	0.01 mg
321-9365-002	LS 160M	160 g	1 mg
321-9366-002	LS 320M	320 g	1 mg
321-9367-002	LS 620M	620 g	1 mg
321-9368-002	LS 920M	920 g	1 mg
321-9369-002	LS 1220M	1220 g	1 mg
321-9459-002	LS 620C	620 g	0.01 g
321-9460-002	LS 1200C	1200 g	0.01 g
321-9461-002	LS 2200C	2200 g	0.01 g
321-9463-002	LS 4200C	4200 g	0.01 g
321-9464-002	LS 6200C	6200 g	0.01 g
321-9550-002	LS 3200D	3200 g	0.1 g
321-9551-002	LS 6200D	6200 g	0.1 g
321-9552-002	LS 10200D	10200 g	0.1 g
321-9616-002	LS 10200G	10200 g	1 g

- All models are also available with a glass draft shield.

PRECISA Series 520 PT Analytical and Precision Balances (with Touchscreen)

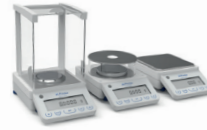
180



Article-No.	Product	Capacity	Readability
520-9221-002	PT 120A	120 g	0.1 mg
520-9222-002	PT 220A	220 g	0.1 mg
520-9321-002	PT 320M	320 g	1 mg
520-9322-002	PT 620M	620 g	1 mg
520-9421-002	PT 320C	320 g	0.01 g
520-9422-002	PT 620C	620 g	0.01 g
520-9423-002	PT 1200C	1200 g	0.01 g
520-9424-002	PT 2200C	2200 g	0.01 g
520-9425-002	PT 3200C	3200 g	0.01 g
520-9426-002	PT 4200C	4200 g	0.01 g
520-9521-002	PT 3200D	3200 g	0.1 g
520-9522-002	PT 6200D	6200 g	0.1 g
520-9523-002	PT 10200D	10200 g	0.1 g
520-9621-002	PT 10200G	10200 g	1 g

PRECISA Series 520 PB Analytical and Precision Balances

181



Article-No.	Product	Capacity	Readability
520-9211-002	PB 120A	120 g	0.1 mg
520-9212-002	PB 220A	220 g	0.1 mg
520-9311-002	PB 320M	320 g	1 mg
520-9312-002	PB 620M	620 g	1 mg
520-9411-002	PB 320C	320 g	0.01 g
520-9412-002	PB 620C	620 g	0.01 g
520-9413-002	PB 1200C	1200 g	0.01 g
520-9414-002	PB 2200C	2200 g	0.01 g
520-9415-002	PB 3200C	3200 g	0.01 g
520-9416-002	PB 4200C	4200 g	0.01 g
520-9511-002	PB 3200D	3200 g	0.1 g
520-9512-002	PB 6200D	6200 g	0.1 g
520-9513-002	PB 10200D	10200 g	0.1 g
520-9611-002	PB 10200G	10200 g	1 g

PRECISA Series 530 Moisture Analyzer

182



Article-No.	Product	Capacity	Readability
530-9324-001	PBM 60, Halogen radiator, 230 V	124 g	1 mg / 0.01%
530-9324-002	PBM 60, Halogen radiator, 115 V	124 g	1 mg / 0.01%
530-9324-003	PBM 60, Infrared radiator, 230 V	124 g	1 mg / 0.01%
530-9324-004	PBM 60, Infrared radiator, 115 V	124 g	1 mg / 0.01%
530-9324-007	PBM 60, Infrared dark radiator, 230 V	124 g	1 mg / 0.01%
530-9324-008	PBM 60, Infrared dark radiator, 115 V	124 g	1 mg / 0.01%

SARTORIUS Minisart® Syringe Filter

183



Article-No.	Product	Unit
16555-K	Minisart NML Syringe Filters, Sterile, 0.45 µm, 28 mm	50/PK
16592-K	Minisart NML Syringe Filters, Sterile, 0.8 µm, 28 mm	50/PK
S6534-FMGUK	Minisart NML Standard Syringe Filter (SFCA), Sterile, 0.2 µm, 28 mm	50/PK
S6555-FMGUK	Minisart NML Standard Syringe Filter (SFCA), Sterile, 0.45 µm, 28 mm	50/PK

SARTORIUS Minisart® RC Syringe Filter

184



Article-No.	Product	Unit
17762-Q	Minisart RC Syringe Filters, 0.45 µm, 15 mm	500/PK
17765-Q	Minisart RC Syringe Filters, 0.45 µm, 25 mm	500/PK

SIGMA ALDRICH HPLC Columns

185



Article-No.	Product	Product Description	Unit
808541	TSKgel® G3000SWXL (5 µm) HPLC Columns	L x I.D. 30 cm x 7.8 mm, diol phase	1/EA
808543	TSKgel® SWXL (7 µm) HPLC Columns	L x I.D. 4 cm x 6 mm, diol phase	1/EA
53829-U	Ascentis® Express 90 Å C18 (2.7 µm) HPLC Columns	L x I.D. 15 cm x 4.6 mm, HPLC Column	1/EA
53827-U	Ascentis® Express 90 Å C18 (2.7 µm) HPLC Columns	L x I.D. 10 cm x 4.6 mm, HPLC Column	1/EA
53838-U	Ascentis® Express 90 Å C8 (2.7 µm) HPLC Columns	L x I.D. 15 cm x 4.6 mm, HPLC Column	1/EA
504971	Discovery® C18 (5 µm) HPLC Columns	L x I.D. 25 cm x 4.6 mm, HPLC Column	1/EA
59356-U	Discovery® Cyano (5 µm) HPLC Columns	L x I.D. 15 cm x 4.6 mm, HPLC Column	1/EA
58338	SUPELCOSIL™ LC-NH ₂ (5 µm) HPLC Columns	L x I.D. 25 cm x 4.6 mm, HPLC Column	1/EA
58298	SUPELCOSIL™ LC-18 (5 µm) HPLC Columns	L x I.D. 25 cm x 4.6 mm, HPLC Column	1/EA
20324AST	Astec® CYCLOBOND I 2000 RSP Chiral (5 µm) HPLC Columns	L x I.D. 25 cm x 4.6 mm, HPLC Column	1/EA

SIGMA ALDRICH Packed GC Columns

186



Article-No.	Product	Product Description	Unit
12390-U	Metal Packed GC Column (General Configuration)	phase none, matrix 60/80 Carboxen-1000 support, L x O.D. x I.D. 15.0 ft (4.6 m) x 1/8 in. x 2.1 mm	1/EA
13052-U	Metal Packed GC Column (General Configuration)	phase none, matrix 80/100 Porapak N support, L x O.D. x I.D. 10.0 ft (3.0 m) x 1/8 in. x 2.1 mm	1/EA
13047-U	Metal Packed GC Column (General Configuration)	phase none, matrix 45/60 Molecular Sieve 13X support, L x O.D. x I.D. 3.0 ft (0.91 m) x 1/8 in. x 2.1 mm	1/EA
12380	Metal Packed GC Column (General Configuration)	phase none, matrix 40/60 Carboxen-1000 support, L x O.D. x I.D. 5.0 ft (1.5 m) x 1/8 in. x 2.1 mm	1/EA
12437	Metal Packed GC Column (General Configuration)	phase none, matrix 80/100 Porapak Q support, L x O.D. x I.D. 6.0 ft (1.8 m) x 1/8 in. x 2.1 mm	1/EA
13979-U	Metal Packed GC Column (General Configuration)	phase none, matrix 80/100 Porapak Q support, L x O.D. x I.D. 10.0 ft (3.0 m) x 1/8 in. x 2.1 mm	1/EA
13801	Metal Packed GC Column (General Configuration)	phase none, matrix 80/100 HayeSep Q support, L x O.D. x I.D. 6.0 ft (1.8 m) x 1/8 in. x 2.1 mm	1/EA
13133-U	Metal Packed GC Column (General Configuration)	phase none, matrix 60/80 Molecular Sieve 5A support, L x O.D. x I.D. 6.0 ft (1.8 m) x 1/8 in. x 2.1 mm	1/EA
13093-U	Glass Packed GC Column (fits Agilent, Configuration "A")	phase none, matrix 80/100 Porapak Q support, L x O.D. x I.D. 6.0 ft (1.8 m) x 1/4 in. x 2.0 mm	1/EA

SIGMA ALDRICH HPLC buffers

187



Article-No.	Product	Product Description	Unit
5438040100	Formic acid 98 - 100%	for HPLC LiChropur™	PK/100MLT
5438280100	ortho-Phosphoric acid	85%, for HPLC LiChropur™	PK/100MLT
5438340100	Ammonium acetate	for HPLC LiChropur™	PK/100GR
5330050050	Ammonium hydrogen carbonate	for LC-MS LiChropur™	PK/50GR
5438080100	Acetic acid	100%, for HPLC LiChropur™	PK/100MLT
5438370100	Ammonium dihydrogen phosphate	for HPLC LiChropur™	PK/100GR
5438270100	Sulfuric acid	98%, for HPLC LiChropur™	PK/100MLT
5438410100	Potassium phosphate monobasic	for HPLC LiChropur™	PK/100GR
5438390100	Potassium phosphate dibasic	anhydrous for HPLC LiChropur™	PK/100GR
5438380100	Sodium phosphate dibasic	anhydrous for HPLC LiChropur™	PK/100GR

SIGMA ALDRICH Salts

188



Article-No.	Product	Product Description	Unit
S9888-500G	Sodium chloride	ACS reagent, ≥99.0%	PK/500GR
P3911-500G	Potassium chloride	ACS reagent, 99.0-100.5%	PK/500GR
P0662-500G	Potassium phosphate monobasic	ACS reagent, ≥99.0%	PK/500GR
216763-500ML	Hydrogen peroxide solution	contains inhibitor, 30 wt. % in H ₂ O, ACS reagent	PK/500MLT
209139-500G	Silver nitrate	ACS reagent, ≥99.0%	PK/500GR
221465-500G	Sodium hydroxide	ACS reagent, ≥97.0%, pellets	PK/500GR
239313-500G	Sodium sulfate	ACS reagent, ≥99.0%, anhydrous, granular	PK/500GR
S9763-500G	Sodium phosphate dibasic	ACS reagent, ≥99.0%	PK/500GR
P3786-500G	Potassium phosphate dibasic	ACS reagent, ≥98%	PK/500GR
S9638-500G	Sodium phosphate monobasic monohydrate	ACS reagent, ≥98%	PK/500GR



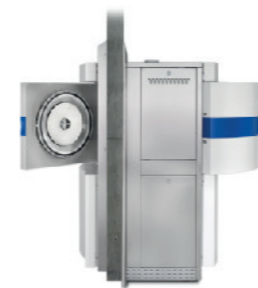
Article-No.	Product	Product Description	Unit
D8537-500ML	Dulbecco's Phosphate Buffered Saline	liquid, Modified, without calcium chloride and magnesium chloride, liquid, sterile-filtered, suitable for cell culture	PK/500GR
D6429-500ML	DMEM - high glucose	With sodium bicarbonate, L-glutamine and sodium pyruvate, liquid, sterile-filtered, suitable for cell culture	PK/500GR
R8758-500ML	RPMI-1640 Medium	With L-glutamine, sodium bicarbonate, liquid, sterile-filtered, suitable for cell culture	PK/500GR
D5796-500ML	DMEM - high glucose	With sodium Bicarbonate and L-glutamine, without sodium pyruvate, liquid, sterile-filtered, suitable for cell culture	PK/500MLT
C2874-100ML	CryoStor® cell cryo-preservation media	CS10	PK/500GR
R0883-500ML	RPMI-1640 Medium	With sodium bicarbonate, without L-glutamine, liquid, sterile-filtered, suitable for cell culture	PK/500GR
M4655-500ML	Minimum Essential Medium Eagle	With Earle's salts, L-glutamine and sodium bicarbonate, liquid, sterile-filtered, suitable for cell culture	PK/500GR
14366C-1000ML	EX-CELL® Advanced CHO Fed-batch Medium	liquid	PK/500GR
D1408-500ML	Dulbecco's Phosphate Buffered Saline	Liquid (10X), without MgCl ₂ and CaCl ₂ , sterile-filtered, suitable for cell culture	PK/500GR
D8662-500ML	Dulbecco's Phosphate Buffered Saline	Liquid, with MgCl ₂ and CaCl ₂ , sterile-filtered, suitable for cell culture	PK/500GR



Article-No.	Product	Chamber volume (total/nominal)	Loading capacity Erlenmeyer flasks (500 ml)	Loading type
000-VX-40	Systec VX-40	51 / 40 l	9	top-loading
000-VX-65	Systec VX-65	73 / 65 l	2 x 8	top-loading
000-VX-75	Systec VX-75	85 / 75 l	3 x 8	top-loading
000-VX-95	Systec VX-95	100 / 95 l	4 x 8	top-loading
000-VX-100	Systec VX-100	117 / 100 l	2 x 14	top-loading
000-VX-120	Systec VX-120	137 / 120 l	3 x 14	top-loading
000-VX-150	Systec VX-150	166 / 150 l	4 x 14	top-loading



Article-No.	Product	Chamber volume (total/nominal)	Loading capacity Erlenmeyer flasks (500 ml)	Loading type
000-DX-25	Systec DX-25	30 / 20 l	6	front loading
000-DX-40	Systec DX-40	50 / 45 l	9	front loading
000-DX-65	Systec DX-65	70 / 65 l	15	front loading
000-DX-90	Systec DX-90	95 / 90 l	21	front loading
000-DX-100	Systec DX-100	113 / 100 l	2 x 15	front loading
000-DX-150	Systec DX-150	162 / 150 l	2x 24	front loading
000-DX-200	Systec DX-200	211 / 200 l	2 x 40	front loading



Article-No.	Product	Chamber volume (total/nominal)	Electrical connection	Loading type
000-HX-90-2D	Systec HX-90 2D	100 / 90 l	380 - 400 V, 50/60 Hz, 16 A	pass through
000-HX-150 -2D	Systec HX-150 2D	160 / 150 l		pass through
000-HX-200-2D	Systec HX-200 2D	210 / 200 l		pass through
000-HX-320-2D	Systec HX-320 2D	370 / 320 l	380 - 400 V, 50/60 Hz, 32 A	pass through
000-HX-430-2D	Systec HX-430 2D	480 / 430 l		pass through
000-HX-540-2D	Systec HX-540 2D	590 / 540 l		pass through
000-HX-650-2D	Systec HX-650 2D	700 / 650 l		pass through
000-HX-580-2D	Systec HX-580 2D	680 / 580 l	380 - 400 V, 50/60 Hz, 63 A	pass through
000-HX-780-2D	Systec HX-780 2D	880 / 780 l		pass through
000-HX-980-2D	Systec HX-980 2D	1075 / 980 l		pass through
000-HX-1180-2D	Systec HX-1180 2D	1270 / 1180 l		pass through
000-HX-1380-2D	Systec HX-1380 2D	1465 / 1380 l		pass through
000-HX-1580-2D	Systec HX-1580 2D	1665 / 1580 l	pass through	



Article-No.	Product	Chamber volume (total/nominal)	Electrical connection	Loading type
000-HX-65	Systec HX-65	70 / 65 l	380 - 400 V, 50/60 Hz, 16 A	front-loading
000-HX-90	Systec HX-90	105 / 90 l		50/60 Hz, 16 A
000-HX-100	Systec HX-100	115 / 100 l		front-loading
000-HX-150	Systec HX-150	165 / 150 l		front-loading
000-HX-200	Systec HX-200	215 / 200 l		front-loading
000-HX-210	Systec HX-210	280 / 210 l	380 - 400 V, 50/60 Hz, 32 A	front-loading
000-HX-320	Systec HX-320	385 / 320 l		front-loading
000-HX-430	Systec HX-430	495 / 430 l		front-loading
000-HX-540	Systec HX-540	600 / 540 l		front-loading
000-HX-650	Systec HX-650	710 / 650 l		front-loading
000-HX-580	Systec HX-580	750 / 580 l	380 - 400 V, 50/60 Hz, 63 A	front-loading
000-HX-780	Systec HX-780	930 / 780 l		front-loading
000-HX-980	Systec HX-980	1130 / 980 l		front-loading
000-HX-1180	Systec HX-1180	1325 / 1180 l		front-loading
000-HX-1380	Systec HX-1380	1520 / 1380 l		front-loading
000-HX-1580	Systec HX-1580	1715 / 1580 l		front-loading



Article-No.	Product	Volume	Unit
4641010N	Finnpiquette F1, Single, micro	0.2-2 µL	1/EA
4641010N	Finnpiquette F1, Single, micro	0.5-5 µL	1/EA
4641020N	Finnpiquette F1, Single, micro	1-10 µL	1/EA
4641030N	Finnpiquette F1, Single	1-10 µL	1/EA
4641040N	Finnpiquette F1, Single, micro	2-20 µL	1/EA
4641050N	Finnpiquette F1, Single	2-20 µL	1/EA
4641060N	Finnpiquette F1, Single	10-100 µL	1/EA
4641070N	Finnpiquette F1, Single	20-200 µL	1/EA
4641080N	Finnpiquette F1, Single	30-300 µL	1/EA
4641090N	Finnpiquette F1, Single	100-1000 µL	1/EA
4641100N	Finnpiquette F1, Single	0.5-5 mL	1/EA
4641110N	Finnpiquette F1, Single	1-10 mL	1/EA
4641120N	Finnpiquette F1, Single, micro	5-50 µL	1/EA
4641130N	Finnpiquette F1, Single	5-50 µL	1/EA
4641140N	Finnpiquette F1, Single, micro	0.2-2 µL	1/EA



Article-No.	Product	Volume	Unit
4661000N	Finnpiquette F1, 8-channel	1-10 µL	1/EA
4661010N	Finnpiquette F1, 8-channel	5-50 µL	1/EA
4661020N	Finnpiquette F1, 8-channel	10-100 µL	1/EA
4661030N	Finnpiquette F1, 8-channel	30-300 µL	1/EA
4661040N	Finnpiquette F1, 12-channel	1-10 µL	1/EA
4661050N	Finnpiquette F1, 12-channel	5-50 µL	1/EA
4661060N	Finnpiquette F1, 12-channel	10-100 µL	1/EA
4661070N	Finnpiquette F1, 12-channel	30-300 µL	1/EA
4661080N	Finnpiquette F1, 16-channel	1-10 µL	1/EA
4661090N	Finnpiquette F1, 16-channel	5-50 µL	1/EA



Article-No.	Product	Volume	Unit
4642010	Finnpiquette F2, Single, micro	0.2-2 µL	1/EA
4642020	Finnpiquette F2, Single, micro	0.5-5 µL	1/EA
4642030	Finnpiquette F2, Single, micro	1-10 µL	1/EA
4642040	Finnpiquette F2, Single	1-10 µL	1/EA
4642050	Finnpiquette F2, Single, micro	2-20 µL	1/EA
4642060	Finnpiquette F2, Single	2-20 µL	1/EA
4642070	Finnpiquette F2, Single	10-100 µL	1/EA
4642080	Finnpiquette F2, Single	20-200 µL	1/EA
4642090	Finnpiquette F2, Single	30-300 µL	1/EA
4642100	Finnpiquette F2, Single	100-1000 µL	1/EA
4642110	Finnpiquette F2, Single	0.5-5 mL	1/EA
4642120	Finnpiquette F2, Single, micro	1-10 mL	1/EA
4642130	Finnpiquette F2, Single	5-50 µL	1/EA

THERMO SCIENTIFIC Finnpiquette™ F2 multi-channel pipettes, variable volume

197



Article-No.	Product	Volume	Unit
4662000	Finnpiquette F2, 8-channel	1-10 µL	1/EA
4662010	Finnpiquette F2, 8-channel	5-50 µL	1/EA
4662020	Finnpiquette F2, 8-channel	10-100 µL	1/EA
4662030	Finnpiquette F2, 8-channel	30-300 µL	1/EA
4662040	Finnpiquette F2, 12-channel	1-10 µL	1/EA
4662050	Finnpiquette F2, 12-channel	5-50 µL	1/EA
4662060	Finnpiquette F2, 12-channel	10-100 µL	1/EA
4662070	Finnpiquette F2, 12-channel	30-300 µL	1/EA
4662080	Finnpiquette F2, 16-channel	1-10 µL	1/EA
4662090	Finnpiquette F2, 16-channel	5-50 µL	1/EA

THERMO SCIENTIFIC NUNC™ Cell Culture Cryogenic Tubes

198



Article-No.	Product	Volume	Unit
374080	Nunc 0.5 mL Cell culture Cryogenic Tubes	0.5 mL	960/PK
374081	Nunc 1 mL Cell culture Cryogenic Tubes	1 mL	960/PK
368632	Nunc 1.8 mL Cell culture Cryogenic Tubes	1.8 mL	1800/PK

VIRTIS AdVantage Pro Freeze Dryer

199



Article-No.	Product	Lowest condenser temperature (50 Hz / 60 Hz)	Lowest shelf temperature (50 Hz / 60 Hz)	Max. condenser capacity	Useable shelf area with 1 shelf
ADP-B	AdVantage Pro Freeze Dryer	-82 °C / -85 °C	-62 °C / -65 °C	6 liters	922 cm ²
ADP-S	"AdVantage Pro Freeze Dryer, with stoppering shelf configuration"	-82 °C / -85 °C	-62 °C / -65 °C	6 liters	922 cm ²

- Temperature uniformity for all freeze dryer: ± 1.0 °C
- Many additional options and accessories are available. We'll be happy to help you choose the right ones.

VIRTIS AdVantage Pro Freeze Dryer

200



Article-No.	Product	Lowest condenser temperature (50 Hz / 60 Hz)	Lowest shelf temperature (50 Hz / 60 Hz)	Max. condenser capacity	Useable shelf area with 3 shelves
G25ELAir	Genesis 25 EL Pilot Freeze Dryer, Air Cooled	-82 °C / -85 °C	-67 °C / -70 °C	25 liters	4266 cm ²
G25ELWater	Genesis 25 EL Pilot Freeze Dryer, Water Cooled	-82 °C / -85 °C	-67 °C / -70 °C	25 liters	4266 cm ²
G35ELAir	Genesis 35 EL Pilot Freeze Dryer, Air Cooled	-82 °C / -85 °C	-67 °C / -70 °C	35 liters	4266 cm ²
G35ELWater	Genesis 35 EL Pilot Freeze Dryer, Water Cooled	-82 °C / -85 °C	-67 °C / -70 °C	35 liters	4266 cm ²

- Temperature uniformity for all freeze dryer: ± 1.0 °C
- Various shelf configurations possible - from one shelf to up to six shelves
- Many additional options and accessories are available. We'll be happy to help you choose the right ones.

VIRTIS Ultra 35L & 50L Pilot-Production Freeze Dryers

201



Article-No.	Product	Lowest condenser temperature (50 Hz / 60 Hz)	Lowest shelf temperature (50 Hz / 60 Hz)	Max. condenser capacity	Useable shelf area with 8 shelves
U35ELAir	"Ultra 35 EL Pilot Freeze Dryer, Air Cooled"	-82 °C / -85 °C	-67 °C / -70 °C	35 liters	1,14 m ²
U35ELWater	"Ultra 35 EL Pilot Freeze Dryer, Water Cooled"	-82 °C / -85 °C	-67 °C / -70 °C	35 liters	1,14 m ²

- Temperature uniformity for all freeze dryer: ± 1.0 °C
- Various shelf configurations possible - from seven shelves to up to 15 shelves
- Many additional options and accessories are available. We'll be happy to help you choose the right ones.

VIRTIS Ultra Prime 50L R&D and Small-Batch Production Freeze Dryer

202



Article-No.	Product	Lowest condenser temperature	Lowest shelf temperature	Max. condenser capacity	Useable shelf area with 8 shelves
UPrime A50	Ultra Prime Freeze Dryer, Air Cooled, 50 Hz	-82 °C	-67 °C	50 liters	1,14 m ²
UPrime A400	Ultra Prime Freeze Dryer, Air Cooled, 50 Hz, 400 V	-82 °C	-67 °C	50 liters	1,14 m ²
UPrime W50	Ultra Prime Freeze Dryer, Water Cooled, 50 Hz	-82 °C	-67 °C	50 liters	1,14 m ²
UPrime W400	Ultra Prime Freeze Dryer, Water Cooled, 50 Hz, 400 V	-82 °C	-67 °C	50 liters	1,14 m ²

- Temperature uniformity for all freeze dryer: ± 1.0 °C
- Many additional options and accessories are available. We'll be happy to help you choose the right ones.

VIRTIS LyoStar 4.0 R&D/Process Development Freeze Dryer

203



Article-No.	Product	Lowest condenser temperature	Lowest shelf temperature	Max. condenser capacity	Useable shelf area with 3 shelves
LyoStar Air 60 Hz	LyoStar 4.0 Laboratory Scale Turn-Key R&D Lyophilizer, Air Cooled, 60 Hz	-85 °C	-70 °C	30 liters	0,427 m ²
LyoStar Water 60 Hz	LyoStar 4.0 Laboratory Scale Turn-Key R&D Lyophilizer, Water Cooled, 60 Hz	-85 °C	-70 °C	30 liters	0,427 m ²
LyoStar Air 50 Hz	LyoStar 4.0 Laboratory Scale Turn-Key R&D Lyophilizer, Air Cooled, 50 Hz	-85 °C	-70 °C	30 liters	0,427 m ²
LyoStar Water 50 Hz	LyoStar 4.0 Laboratory Scale Turn-Key R&D Lyophilizer, Water Cooled, 50 Hz	-85 °C	-70 °C	30 liters	0,427 m ²
LyoStar Air 400V 50 Hz	LyoStar 4.0 Laboratory Scale Turn-Key R&D Lyophilizer, Air Cooled, 50 Hz, 400 V	-85 °C	-70 °C	30 liters	0,427 m ²
LyoStar Water 400V 50 Hz	LyoStar 4.0 Laboratory Scale Turn-Key R&D Lyophilizer, Water Cooled, 50 Hz, 400 V	-85 °C	-70 °C	30 liters	0,427 m ²

- Temperature uniformity for all freeze dryer: ± 1.0 °C
- SMART™ Freeze Dryer technology
- ControlLyo® Controlled Nucleation Technology ready, which allows for adding ControlLyo® at any time
- Optional LyoFlux® TDLAS sensors for vapor mass flow measurement and Tempris® wireless sensor for real-time product temperature measurement
- Many additional options and accessories are available. We'll be happy to help you choose the right ones.

WELCH Automated Diaphragm Vacuum System

204



Article-No.	Product	Ultimate Pressure	UPumping speed
124184	LVS 105 T ef+ Automated Diaphragm Vacuum System	≤2 mbar	1.1 mbar (18 L/min)

WELCH Rotary Vane Pumps

205



Article-No.	Product	Starter package includes
330070	CRVpro2 Starter package, two-stage rotary vane pump	≤Oil mist filter AKD, 2-way ball valve, hose adapter DN16KF-10/8, 1.5 meter rubber vacuum hose and oil drain kit

WELCH Aspiration system

206



Article-No.	Product	Pumping speed (60 Hz)
112037	Biovac 106 Aspiration system with secretion jar	16 L/min

WELCH Multirange Vacuum Gauge

207



Article-No.	Product	Measuring range	Max. pressure
600092	VMpro Multirange Vacuum Gauge for rough and fine vacuum range	1500 - 5 x 10 ⁻⁵ mbar	10 bar

WELCH Vacuum Controller

208



Article-No.	Product	Vacuum pressure control range
600100	600100 VC pro 601 Vacuum Controller 1 - 1100 mbar	1 - 1100 mbar

WELCH Vacuum Controller

209



Article-No.	Product	Connection
700010	Oil mist filter	DN 17 KF flanges

WHATMAN 1PS Phase Separator Papers

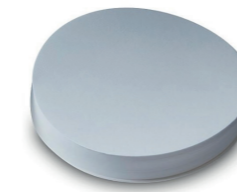
210



Article-No.	Product	Unit
2200-070	1PS Phase Separator for Solvent Extraction, 70 mm circle	100/PK
2200-090	1PS Phase Separator for Solvent Extraction, 90 mm circle	100/PK
2200-100	1PS Phase Separator for Solvent Extraction, 110 mm circle	100/PK
2200-125	1PS Phase Separator for Solvent Extraction, 125 mm circle	100/PK
2200-150	1PS Phase Separator for Solvent Extraction, 150 mm circle	100/PK
2200-185	1PS Phase Separator for Solvent Extraction, 185 mm circle	100/PK
2200-240	1PS Phase Separator for Solvent Extraction, 240 mm circle	100/PK
2200-270	1PS Phase Separator for Solvent Extraction, 270 mm circle	100/PK

WHATMAN Chr Cellulose Chromatography Papers

211



Article-No.	Product	Unit
3030-153	Grade 3MM Chr Blotting Paper, sheet, 15 x 17.5 cm	100/PK
3030-861	Grade 3MM Chr Blotting Paper, sheet, 20 x 20 cm	100/PK
3030-392	Grade 3MM Chr Blotting Paper, sheet, 35 x 45 cm	100/PK
3030-917	Grade 3MM Chr Blotting Paper, Sheet, 46 x 57 cm	100/PK

WHATMAN Nylon Membrane Circles

212



Article-No.	Product	Unit
7402-004	Nylon Membrane Circle, 0.2 µm pore size, 47 mm	100/PK
7404-004	Nylon Membrane Circle, 0.45 µm pore size, 47 mm	100/PK
7408-004	Nylon Membrane Circle, 0.8 µm pore size, 47 mm	100/PK
7410-004	Nylon Membrane Circle, 1.0 µm pore size, 47 mm	100/PK

WHATMAN Grade GF/A Glass Microfiber Filters, Binder Free

213



Article-No.	Product	Unit
1820-025	Grade GF/A Fine Retention Filter, 25 mm circle	100/PK
1820-047	Grade GF/A Fine Retention Filter, 47 mm circle	100/PK
1820-055	Grade GF/A Fine Retention Filter, 55 mm circle	100/PK
1820-070	Grade GF/A Fine Retention Filter, 70 mm circle	100/PK
1820-090	Grade GF/A Fine Retention Filter, 90 mm circle	100/PK
1820-110	Grade GF/A Fine Retention Filter, 110 mm circle	100/PK
1820-150	Grade GF/A Fine Retention Filter, 150 mm circle	100/PK

WHATMAN Grade GF/B Glass Microfiber Filters, Binder Free

214



Article-No.	Product	Unit
1821-025	Grade GF/B Filter for Liquid Scintillation, 25 mm circle	100/PK
1821-047	Grade GF/B Filter for Liquid Scintillation, 47 mm circle	100/PK
1821-055	Grade GF/B Filter for Liquid Scintillation, 55 mm circle	100/PK
1821-070	Grade GF/B Filter for Liquid Scintillation, 70 mm circle	100/PK
1821-090	Grade GF/B Filter for Liquid Scintillation, 90 mm circle	25/PK
1821-110	Grade GF/B Filter for Liquid Scintillation, 110 mm circle	25/PK
1821-150	Grade GF/B Filter for Liquid Scintillation, 150 mm circle	25/PK

WHATMAN Grade GF/C Microfiber Glass Filter, Binder Free

215



Article-No.	Product	Unit
1822-025	Grade GF/C Glass Microfiber Filter, 25 mm circle	100/PK
1822-047	Grade GF/C Glass Microfiber Filter, 47 mm circle	100/PK
1822-055	Grade GF/C Glass Microfiber Filter, 55 mm circle	100/PK
1822-070	Grade GF/C Glass Microfiber Filter, 70 mm circle	100/PK
1822-090	Grade GF/C Glass Microfiber Filter, 90 mm circle	100/PK
1822-110	Grade GF/C Glass Microfiber Filter, 110 mm circle	100/PK
1822-150	Grade GF/C Glass Microfiber Filter, 150 mm circle	100/PK

WHATMAN Grade GF/D Glass Microfiber Filters, Binder Free

216



Article-No.	Product	Unit
1823-007	Grade GF/D Glass Microfiber Prefilter, 7 mm circle	100/PK
1823-025	Grade GF/D Glass Microfiber Prefilter, 25 mm circle	100/PK
1823-047	Grade GF/D Glass Microfiber Prefilter, 47 mm circle	100/PK
1823-070	Grade GF/D Glass Microfiber Prefilter, 70 mm circle	100/PK
1823-110	Grade GF/D Glass Microfiber Prefilter, 110 mm circle	25/PK

WHATMAN Grade GF/F Glass Microfiber Filters, Binder Free

217



Article-No.	Product	Unit
1825-025	Grade GF/F Filter for TCLP Test Use, 25 mm circle	100/PK
1825-047	Grade GF/F Filter for TCLP Test Use, 47 mm circle	100/PK
1825-055	Grade GF/F Filter for TCLP Test Use, 55 mm circle	100/PK
1825-070	Grade GF/F Filter for TCLP Test Use, 70 mm circle	100/PK
1825-090	Grade GF/F Filter for TCLP Test Use, 90 mm circle	25/PK
1825-110	Grade GF/F Filter for TCLP Test Use, 110 mm circle	25/PK
1825-125	Grade GF/F Filter for TCLP Test Use, 125 mm circle	25/PK
1825-150	Grade GF/F Filter for TCLP Test Use, 150 mm circle	25/PK

WHATMAN Grade 1 Qualitative Filter Papers

218



Article-No.	Product	Unit
1001-042	Grade 1 Qualitative Filter Paper Standard Grade, circle, 42.5 mm	100/PK
1001-047	Grade 1 Qualitative Filter Paper Standard Grade, circle, 47 mm	100/PK
1001-055	Grade 1 Qualitative Filter Paper Standard Grade, circle, 55 mm	100/PK
1001-070	Grade 1 Qualitative Filter Paper Standard Grade, circle, 70 mm	100/PK
1001-090	Grade 1 Qualitative Filter Paper Standard Grade, circle, 90 mm	100/PK
1001-110	Grade 1 Qualitative Filter Paper Standard Grade, circle, 110 mm	100/PK
1001-125	Grade 1 Qualitative Filter Paper Standard Grade, circle, 125 mm	100/PK
1001-150	Grade 1 Qualitative Filter Paper Standard Grade, circle, 150 mm	100/PK
1001-185	Grade 1 Qualitative Filter Paper Standard Grade, circle, 185 mm	100/PK

WHATMAN Grade 2 Qualitative Filter Papers

219



Article-No.	Product	Unit
1002-042	Grade 1 Qualitative Filter Paper Standard Grade, circle, 42.5 mm	100/PK
1002-047	Grade 1 Qualitative Filter Paper Standard Grade, circle, 47 mm	100/PK
1002-055	Grade 1 Qualitative Filter Paper Standard Grade, circle, 55 mm	100/PK
1002-070	Grade 1 Qualitative Filter Paper Standard Grade, circle, 70 mm	100/PK
1002-090	Grade 1 Qualitative Filter Paper Standard Grade, circle, 90 mm	100/PK
1002-110	Grade 1 Qualitative Filter Paper Standard Grade, circle, 110 mm	100/PK
1002-125	Grade 1 Qualitative Filter Paper Standard Grade, circle, 125 mm	100/PK
1002-150	Grade 1 Qualitative Filter Paper Standard Grade, circle, 150 mm	100/PK
1001-185	Grade 1 Qualitative Filter Paper Standard Grade, circle, 185 mm	100/PK

WHATMAN Grade 3 Qualitative Filter Papers

220



Article-No.	Product	Unit
1003-055	Grade 3 Qualitative Filter Paper Standard Grade, circle, 55 mm	100/PK
1003-070	Grade 3 Qualitative Filter Paper Standard Grade, circle, 70 mm	100/PK
1003-090	Grade 3 Qualitative Filter Paper Standard Grade, circle, 90 mm	100/PK
1003-110	Grade 3 Qualitative Filter Paper Standard Grade, circle, 110 mm	100/PK
1003-125	Grade 3 Qualitative Filter Paper Standard Grade, circle, 125 mm	100/PK
1003-150	Grade 3 Qualitative Filter Paper Standard Grade, circle, 150 mm	100/PK
1003-185	Grade 3 Qualitative Filter Paper Standard Grade, circle, 185 mm	100/PK

WHATMAN Grade 4 Qualitative Filter Papers

221



Article-No.	Product	Unit
1004-042	Grade 4 Qualitative Filter Paper Standard Grade, circle, 42.5 mm	100/PK
1004-055	Grade 4 Qualitative Filter Paper Standard Grade, circle, 55 mm	100/PK
1004-070	Grade 4 Qualitative Filter Paper Standard Grade, circle, 70 mm	100/PK
1004-090	Grade 4 Qualitative Filter Paper Standard Grade, circle, 90 mm	100/PK
1004-110	Grade 4 Qualitative Filter Paper Standard Grade, circle, 110 mm	100/PK
1004-125	Grade 4 Qualitative Filter Paper Standard Grade, circle, 125 mm	100/PK
1004-150	Grade 4 Qualitative Filter Paper Standard Grade, circle, 150 mm	100/PK
1004-185	Grade 4 Qualitative Filter Paper Standard Grade, circle, 185 mm	100/PK

WHATMAN Grade 5 Qualitative Filter Papers

222



Article-No.	Product	Unit
1005-042	Grade 5 Qualitative Filter Paper Standard Grade, circle, 42.5 mm	100/PK
1005-055	Grade 5 Qualitative Filter Paper Standard Grade, circle, 55 mm	100/PK
1005-070	Grade 5 Qualitative Filter Paper Standard Grade, circle, 70 mm	100/PK
1005-090	Grade 5 Qualitative Filter Paper Standard Grade, circle, 90 mm	100/PK
1005-110	Grade 5 Qualitative Filter Paper Standard Grade, circle, 110 mm	100/PK
1005-125	Grade 5 Qualitative Filter Paper Standard Grade, circle, 125 mm	100/PK
1005-150	Grade 5 Qualitative Filter Paper Standard Grade, circle, 150 mm	100/PK
1005-185	Grade 5 Qualitative Filter Paper Standard Grade, circle, 185 mm	100/PK

WHATMAN Grade 6 Qualitative Filter Papers

223



Article-No.	Product	Unit
1006-042	Grade 6 Qualitative Filter Paper Standard Grade, circle, 42.5 mm	100/PK
1006-070	Grade 6 Qualitative Filter Paper Standard Grade, circle, 70 mm	100/PK
1006-090	Grade 6 Qualitative Filter Paper Standard Grade, circle, 90 mm	100/PK
1006-110	Grade 6 Qualitative Filter Paper Standard Grade, circle, 110 mm	100/PK
1006-125	Grade 6 Qualitative Filter Paper Standard Grade, circle, 125 mm	100/PK
1006-150	Grade 6 Qualitative Filter Paper Standard Grade, circle, 150 mm	100/PK

WHATMAN Quantitative Filter Papers, Ashless, Grade 40

224



Article-No.	Product	Unit
1440-042	Grade 40 Ashless Filter Paper for Pollution Analysis, 42.5 mm circle	100/PK
1440-055	Grade 40 Ashless Filter Paper for Pollution Analysis, 55 mm circle	100/PK
1440-070	Grade 40 Ashless Filter Paper for Pollution Analysis, 70 mm circle	100/PK
1440-090	Grade 40 Ashless Filter Paper for Pollution Analysis, 90 mm circle	100/PK
1440-110	Grade 40 Ashless Filter Paper for Pollution Analysis, 110 mm circle	100/PK
1440-125	Grade 40 Ashless Filter Paper for Pollution Analysis, 125 mm circle	100/PK
1440-150	Grade 40 Ashless Filter Paper for Pollution Analysis, 150 mm circle	100/PK
1440-185	Grade 40 Ashless Filter Paper for Pollution Analysis, 185 mm circle	100/PK

WHATMAN Quantitative Filter Papers, Ashless, Grade 42

225



Article-No.	Product	Unit
1442-042	Grade 42 Ashless Filter Paper for Instrumental Analysis, 42.5 mm circle	100/PK
1442-055	Grade 42 Ashless Filter Paper for Instrumental Analysis, 55 mm circle	100/PK
1442-070	Grade 42 Ashless Filter Paper for Instrumental Analysis, 70 mm circle	100/PK
1442-090	Grade 42 Ashless Filter Paper for Instrumental Analysis, 90 mm circle	100/PK
1442-110	Grade 42 Ashless Filter Paper for Instrumental Analysis, 110 mm circle	100/PK
1442-125	Grade 42 Ashless Filter Paper for Instrumental Analysis, 125 mm circle	100/PK
1442-150	Grade 42 Ashless Filter Paper for Instrumental Analysis, 150 mm circle	100/PK
1442-185	Grade 42 Ashless Filter Paper for Instrumental Analysis, 185 mm circle	100/PK

WHATMAN Puradisc™ non-sterile PVDF syringe filters

226



Article-No.	Product	Unit
6779-0402	Puradisc 4 mm non-sterile Polyvinylidene Difluoride Syringe Filter, 0.2 µm	100/PK
6779-0404	Puradisc 4 mm non-sterile Polyvinylidene Difluoride Syringe Filter, 0.45 µm	100/PK
6779-1302	Puradisc 4 mm non-sterile Polyvinylidene Difluoride Syringe Filter, 0.2 µm	100/PK
6779-1304	Puradisc 4 mm non-sterile Polyvinylidene Difluoride Syringe Filter, 0.45 µm	100/PK
6746-2502	Puradisc 4 mm non-sterile Polyvinylidene Difluoride Syringe Filter, 0.2 µm	50/PK
6746-2504	Puradisc 4 mm non-sterile Polyvinylidene Difluoride Syringe Filter, 0.45 µm	50/PK

WHATMAN Puradisc™ non-sterile PTFE syringe filters

227



Article-No.	Product	Unit
6784-0402	Puradisc 4 mm Polytetrafluoroethylene Syringe Filter, 0.2 µm	100/PK
6784-0404	Puradisc 4 mm Polytetrafluoroethylene Syringe Filter, 0.45 µm	100/PK
6784-1302	Puradisc 4 mm Polytetrafluoroethylene Syringe Filter, 0.2 µm	100/PK
6784-1304	Puradisc 4 mm Polytetrafluoroethylene Syringe Filter, 0.45 µm	100/PK
6784-2502	Puradisc 4 mm Polytetrafluoroethylene Syringe Filter, 0.2 µm	50/PK
6784-2504	Puradisc 4 mm Polytetrafluoroethylene Syringe Filter, 0.45 µm	50/PK
10463523	Puradisc 4 mm Polytetrafluoroethylene Syringe Filter, 1 µm	100/PK
10463533	Puradisc 4 mm Polytetrafluoroethylene Syringe Filter, 5 µm	100/PK

XYLEM WTW, Multi-parameter portable meter

228



Article-No.	Product	Features
2FD57F	Multi 3630 IDS SET F	Multi set in field case with IDS sensors (SenTix® 940, TetraCon® 925, FDO® 925, QSC-Kit (EVE obligatory))

- Professional digital multi meter for portable field measurement
- Triple channel input, wireless ready, color graphic display incl. data logger and USB interfaces
- Set with stand, beaker, rechargeable batteries, USB cable, universal power supply, armoring SM Pro

XYLEM SI Analytics, Automatic Titrator with exchangeable heads for potentiometry

229



Article-No.	Product	Features
285220170	TL 7000-M2/20	TitroLine® 7000 basic unit with magnetic stirrer TM 235 and 20 ml exchangeable unit WA 20

- Set also includes brown glass bottle for titrant, GL 45 and S 40-bottle adapter, tubes, drip tube and titration tip
- With pH-combination electrode A 162 2M-DIN-ID and buffer set

XYLEM Bellingham + Stanley, Digital Refractometer

230



Article-No.	Product	Features
19-40	RFM340-T REFRACTOMETER	Digital refractometer with 3-decimal place / 0-100 Brix (1.58 RI) touchscreen input and Peltier temperature control

- Perfect for measurement and control in demanding food, beverage, chemical and industrial applications
- Wide beam scan for non-homogenous samples

XYLEM ebro, Temperature Data Logger Set

231



Article-No.	Product	Features
1601-0011	EBI 20-TF-Set	Food logger set, incl. calibration certificate

- Set consisting of: EBI 20-TF data logger, EBI 20 IF interface, Software Winlog.basic downloadlink
- Memory capacity of 8,000 measurements for the continuous documentation and monitoring of temperature

Notes